

## **Historic, Archive Document**

Do not assume content reflects current scientific knowledge, policies, or practices.



62.89

LIBRARY  
RECEIVED  
★ JUL 12 1932 ★  
U. S. Department of Agriculture.



Seeds

Bulbs

*King Alfred Narcissus*

FOR SUMMER AND FALL PLANTING

Geo. Tait & Sons  
INC



Norfolk, Va.

THOROBRED SEEDS

*Best by Test for Over Sixty Years*

1932

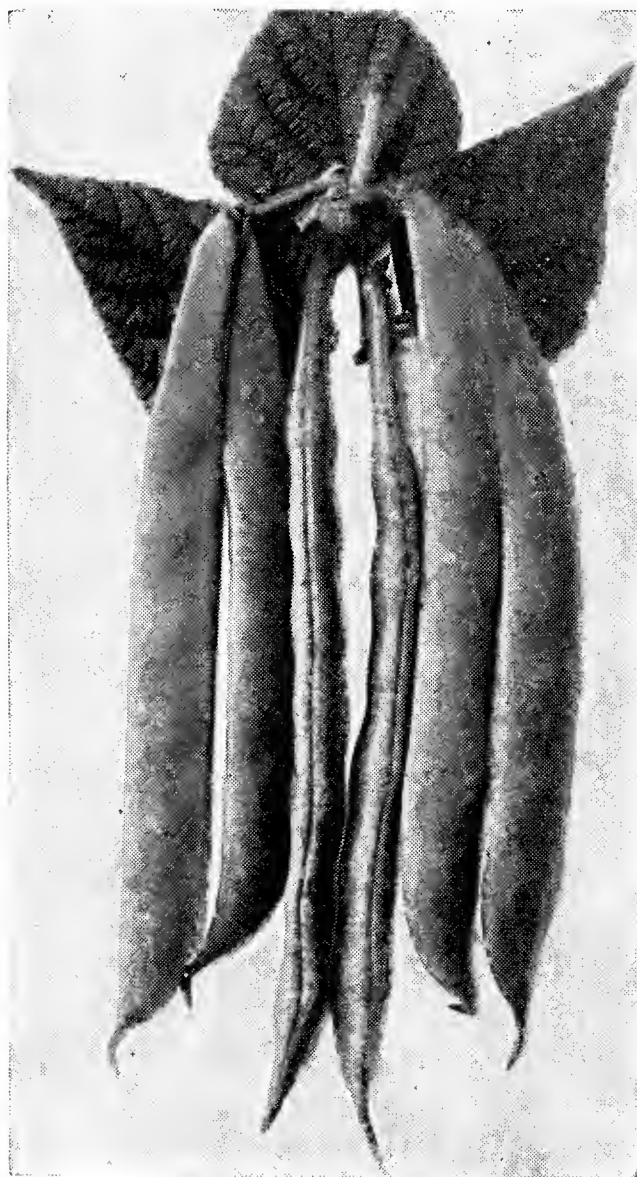
# Tait's Thorobred Vegetable Seeds

## Flower Seeds and Flowering Bulbs for Summer and Fall Planting

For over sixty years it has been our aim and constant endeavor to sell the best seeds that can be grown, and our customers and prospective customers will find listed varieties that the most successful home market gardeners and truckers have found to be "Best by Test."

### Lowest Prices In Many Years And Subject To Change Without Notice

Geo. Tait & Sons, Inc., gives no warranty, express or implied, as to description, quality, productiveness, or any other matter of any seeds, bulbs or plants it sells, and will not be responsible for the crop.



Bountiful Stringless Beans.

### Fordhook Bush Lima Beans

True Bush Form—Prolific—  
Large Well-Filled Pods.

Thicker and rounder than the Wilson, this variety of the potato type is very popular, and, in our judgment, the best Large Bush Lima, either for home or market. Pkt. 10 cts., ½ lb. 25 cts., lb. 45 cts., 2 lbs. 80 cts., 5 lbs. \$1.85, 10 lbs. \$3.50. Postpaid. Not prepaid, 25 lbs. \$7.75, 50 lbs. \$15.25.

## BUSH SNAP BEANS

### With Green Pods

**Bountiful** Stringless—Prolific—Good for fall crop. Our stock of this popular variety is unusually fine. Whether for market, or the home garden, this is the most desirable flat green-podded bean. It is extra early, hardy, an enormous bearer, and the long, handsome pods are stringless and of excellent quality. A popular variety. Pkt. 10 cts., ½ lb. 20 cts., lb. 30 cts., 2 lbs. 55 cts., 5 lbs. \$1.20, 10 lbs. \$2.00. Postpaid. Not prepaid, 25 lbs. \$3.25, 50 lbs. \$6.25.

**Stringless Black Valentine** An improved Black Valentine just as hardy, just as early and just as prolific as the old variety, but entirely stringless. The pods are long, straight, and nearly round when young, and of good quality. Pkt. 10 cts., ½ lb. 20 cts., lb. 35 cts., 2 lbs. 60 cts., 5 lbs. \$1.30, 10 lbs. \$2.25. Postpaid. Not prepaid, 25 lbs. \$3.75, 50 lbs. \$7.25.

**Mammoth Stringless Valentine** This variety is also called Giant Stringless Green Pod, and for second crop or mid-summer planting is one of the best. The pods somewhat resemble those of Stringless Green-pod, but are longer, nearly straight, and of the same splendid quality. A good home garden sort, as it is fine for canning. Pkt. 10 cts., ½ lb. 20 cts., lb. 30 cts., 2 lbs. 55 cts., 5 lbs. \$1.20, 10 lbs. \$2.00. Postpaid. Not prepaid, 25 lbs. \$3.25, 50 lbs. \$6.25.

**Stringless Green Pod** Known also as Burpee's Stringless. This round-podded bean is considered one of the best for either market or the home garden. The pods are of medium length, slightly curved, stringless, very fleshy, of the best quality, and remain in edible condition for a long time. Pkt. 10 cts., ½ lb. 20 cts., lb. 30 cts., 2 lbs. 55 cts., 5 lbs. \$1.20, 10 lbs. \$2.00. Postpaid. Not prepaid, 25 lbs. \$3.25, 50 lbs. \$6.25.

**Superior Stringless** Where earliness is not of first importance, this is a splendid sort, especially for late summer or fall crop. It somewhat resembles Full Measure but is earlier, hardier, and more prolific. Pkt. 10 cts., ½ lb. 20 cts., lb. 35 cts., 2 lbs. 60 cts., 5 lbs. \$1.30, 10 lbs. \$2.25. Postpaid. Not prepaid, 25 lbs. \$3.75, 50 lbs. \$7.25.

**Late Refugee or 1000 to 1** Our stock of this Bean is exceptionally fine. The pods are nearly round, medium long, and while not entirely stringless, are of splendid quality. Very prolific. Pkt. 10 cts., ½ lb. 15 cts., lb. 25 cts., 2 lbs. 45 cts., 5 lbs. \$1.05, 10 lbs. \$1.85. Postpaid. Not prepaid, 25 lbs. \$3.00, 50 lbs. \$5.75.

### With Yellow Pods

**Hodson Silver Wax** The most popular wax bean for fall crop. The beautiful long flat pods are apparently immune to "rust," but two weeks later than Currie's Rust Proof. Pkt. 10 cts., ½ lb. 15 cts., lb. 25 cts., 2 lbs. 45 cts., 5 lbs. \$1.05, 10 lbs. \$1.85. Postpaid. Not prepaid, 25 lbs. \$3.00, 50 lbs. \$5.75.

**Currie's Rust Proof Wax** A desirable standard black-seeded variety. The pods are long, flat, golden yellow, and quite free from rust. Pkt. 10 cts., ½ lb. 15 cts., lb. 25 cts., 2 lbs. 45 cts., 5 lbs. \$1.05, 10 lbs. \$1.85. Postpaid. Not prepaid, 25 lbs. \$3.00, 50 lbs. \$5.75.

**Tait's Thorobred Celestial Wax** A splendid early wax bean. The plants are particularly strong, vigorous, and free from disease. The pods are long, slightly curved, and of a pleasing soft yellow color. Very prolific. Pkt. 10 cts., ½ lb. 20 cts., lb. 30 cts., 2 lbs. 55 cts., 5 lbs. \$1.20, 10 lbs. \$2.00. Postpaid. Not prepaid, 25 lbs. \$3.25, 50 lbs. \$6.25.

## BEET

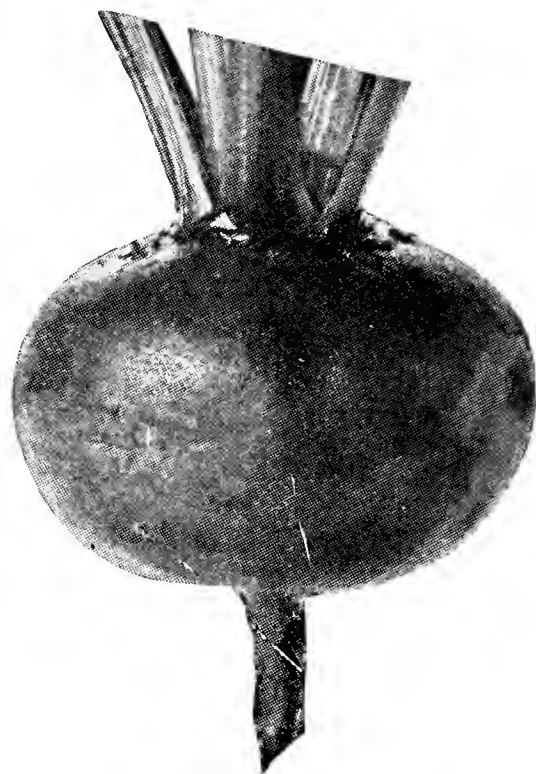
**Early Wonder** A splendid variety. The root is globular shaped, with small tap root, of a beautiful blood-red color and of splendid quality. Deservedly popular with both home and market gardeners. Pkt. 5 cts., oz. 10 cts.,  $\frac{1}{4}$  lb. 25 cts., lb. 85c. Postpaid.

**Crosby's Egyptian Beet** Our stock of this popular early variety has been bred to perfection. The roots are of a most attractive flattened globe shape, with medium tap root, and the quality all that could be desired for either the market or home garden. Pkt. 5 cts., oz. 10 cts.,  $\frac{1}{4}$  lb. 25 cts., lb. 85 cts. Postpaid.

**Special Crosby's Egyptian** A selection from our regular Crosby's Egyptian. It has the same shape, and all the fine qualities of that beet, but with bright red skin. Many growers prefer it to the darker variety. Pkt. 10 cts., oz. 15 cts.,  $\frac{1}{4}$  lb. 30 cts., lb. \$1.00. Postpaid.

**Detroit** None of the globe-shaped beets for the main crop are as dark in color as this, and it is also remarkable for uniformity in size and shape. The skin is very smooth, the flesh crisp, tender, sweet, and extremely tenacious of its brilliant color. A splendid kind for home and market gardeners. Pkt. 5 cts., oz. 10 cts.,  $\frac{1}{4}$  lb. 25 cts., lb. 85 cts. Postpaid.

**Eclipse** Once largely used by market gardeners, this handsome beet has been superseded in most sections by Early Wonder, Crosby's Egyptian, and Detroit. The roots are round, slightly top-shaped, and of a bright red color. A good sort for the home garden, for both early and mid-season sowing. Pkt. 5 cts., oz. 10 cts.,  $\frac{1}{4}$  lb. 25 cts., lb. 85 cts. Postpaid.

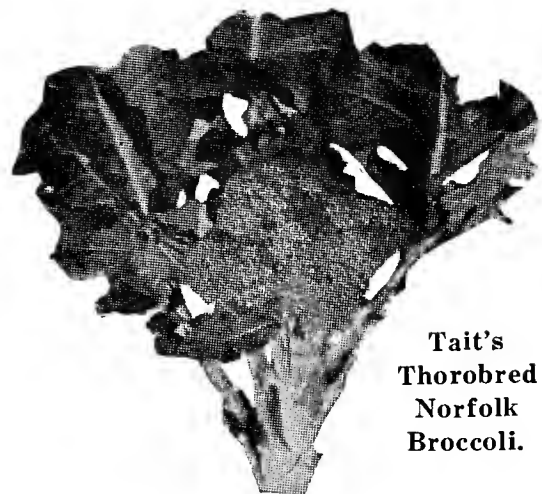


Special Crosby's Egyptian Beet.

## BROCCOLI

**Tait's Thorobred Norfolk** A delicious vegetable that should be more universally grown. It combines the mellow flavor of the Cauliflower with the nutty tange of Celery, and is considered by many superior to Cauliflower, as it has a more delicate flavor. It differs from the Valentine Broccoli in that it is much smaller, and the head is green instead of white. The plant grows about 2 feet high, producing a medium sized central head. After the central head has been cut, numerous sturdy shoots develop, each sprout terminating in a small green head. There are numerous stocks of Broccoli, many of which are not worth planting. Our stock has been bred to produce the largest central head, and is preferred by critical market gardeners, as it commands the highest prices on all markets. Pkt. 10 cts., oz. 50 cts.,  $\frac{1}{4}$  lb. \$1.50, lb. \$5.00. Postpaid.

**Salad, or Turnip** This variety has become very popular on the Eastern Shore of Virginia. It is planted in the fall, and in growth, somewhat resembles the Seven Top Turnip. In the spring it sends up sprouts, which are cut and bunched for market. Pkt. 5 cts., oz. 10 cts.,  $\frac{1}{4}$  lb. 20 cts., lb. 70 cts. Postpaid.



Tait's  
Thorobred  
Norfolk  
Broccoli.

**St. Valentine** This variety is popular in the West. The large solid heads resemble cauliflower and remain in good condition longer than any other sort. Pkt. 10 cts., oz. 80 cts.,  $\frac{1}{4}$  lb. \$2.25, lb. \$8.00. Postpaid.

## CARROT

**Chantenay** Considered the handsomest of all carrots. This fine half long variety is seven inches in length by one and a half inches in diameter, and is a favorite with truckers, market and home gardeners. Pkt. 5 cts., oz. 10 cts.,  $\frac{1}{4}$  lb. 20 cts., lb. 75 cts. Postpaid.

**Chantenay Special** This handsome carrot is practically the same shape and size of Chantenay, and differs from it only in that it shows red all the way through without any yellow core. Pkt. 10 cts., oz. 15 cts.,  $\frac{1}{4}$  lb. 30 cts., lb. \$1.15. Postpaid.

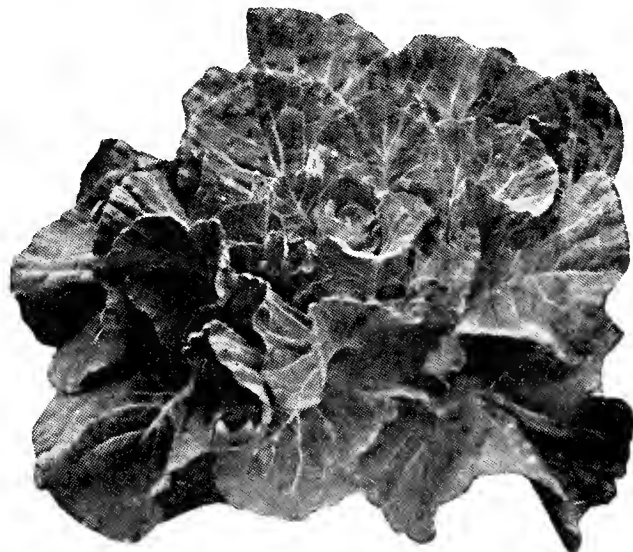
**Danvers** A standard half long variety growing seven or eight inches long by two inches in diameter, and although it will yield more tonnage per acre, is not as popular with Southern truckers as Chantenay. Pkt. 5 cts., oz. 10 cts.,  $\frac{1}{4}$  lb. 20 cts., lb. 75 cts. Postpaid.

## COLLARDS

**Tait's Thorobred Cabbage Head** A new variety differing from the ordinary so-called "Cabbage Collard" in that it resembles a cabbage more than a collard. A large percentage of them have soft heads, formed by the folding of the center leaves. It is hardy, short stemmed, and of excellent quality. Pkt. 10 cts., oz. 15 cts.,  $\frac{1}{4}$  lb. 30 cts., lb. \$1.00. Postpaid.

**Southern Short Stem** A great favorite in the South, where it will live, flourish, and yield a bountiful return in places where it would be almost impossible to raise cabbage heads. Pkt. 5 cts., oz. 10 cts.,  $\frac{1}{4}$  lb. 20 cts., lb. 60 cts. Postpaid.

**White Cabbage** This popular Collard forms a sort of head, and is more attractive in appearance than the Southern Short Stem, although the latter is better to carry through the winter. Pkt. 5 cts., oz. 10 cts.,  $\frac{1}{4}$  lb. 20 cts., lb. 60 cts. Postpaid.



Tait's Thorobred Cabbage Head Collard

## CABBAGE



Tait's Thorobred Norfolk Wakefield Cabbage.

**Tait's Thorobred Norfolk Wakefield** In our ceaseless efforts to improve the Wakefield Cabbage we have succeeded in getting a variety that will average nearly as large as the Charleston Wakefield with handsome solid heads, yet two weeks earlier. We believe it is what truckers and market gardeners have been looking for and we urge all cabbage growers to have a portion of their crop in this variety. Pkt. 10 cts., oz. 25 cts.,  $\frac{1}{4}$  lb. 70 cts., lb. \$2.50. Postpaid.

**Large or Charleston Wakefield** Very popular in the cabbage-growing district about Charleston, so much so that it is quite often called the Charleston Wakefield. It is a little larger than Norfolk Wakefield and about ten days later in maturing. Pkt. 10 cts., oz. 25 cts.,  $\frac{1}{4}$  lb. 65 cts., lb. \$2.25. Postpaid.

**Golden Acre** This early round-headed cabbage is a selection from Copenhagen Market, and matures about a week earlier than that variety. The heads average about five pounds, are round as a ball, very firm, and are of good quality. Owing to its earliness, uniformity, and attractive appearance, it is a popular variety. Pkt. 15 cts., oz. 40 cts.,  $\frac{1}{4}$  lb. \$1.15, lb. \$4.00. Postpaid.

Our Cabbage Seed is produced by the best growers in the world from carefully bred stocks, and for more than half a century has been preferred by the most critical truckers and market gardeners in all sections of the country.

**Copenhagen Market** A round-headed early cabbage of medium size, very solid, and of good quality. Pkt. 10 cts., oz. 35 cts.,  $\frac{1}{4}$  lb. \$1.00, lb. \$3.75. Postpaid.

**Tait's Thorobred Midsummer** About 10 days later than Tait's Early Summer. This distinct strain of Flat Dutch we consider a splendid second early variety. The heads are solid, of unsurpassed beauty, and are very uniform. An excellent cabbage for the season after which it is named. Pkt. 10 cts., oz. 30 cts.,  $\frac{1}{4}$  lb. 90 cts., lb. \$3.00. Postpaid.

**All Head** One of the many Long Island selections of Early Flat Dutch, sometimes called Solid South, and characterized by a compact, uniform head. Pkt. 10 cts., oz. 25 cts.,  $\frac{1}{4}$  lb. 65 cts., lb. \$2.25. Postpaid.

**Tait's Thorobred Pilot** The earliest cabbage in cultivation, being ready for market quite two weeks in advance of the Selected Wakefield. The long conical shape of the head allows nearly twenty per cent more plants to the acre than of any other cabbage, and it is therefore very economically grown. Does not head as hard as the Wakefields. Pkt. 10 cts., oz. 35 cts.,  $\frac{1}{4}$  lb. \$1.00, lb. \$3.75. Postpaid.

**Tait's Thorobred Selected Wakefield** A selection from the True Early Wakefield, that is about a week earlier in maturing. The heads are solid and the same shape as the True Early Wakefield, but smaller, and very uniform in heading. All growers of Early Cabbage should use it in connection with our other strains of Wakefield. Pkt. 10 cts., oz. 25 cts.,  $\frac{1}{4}$  lb. 70 cts., lb. \$2.50. Postpaid.

**Tait's Thorobred True Wakefield** Our Thorobred strain of True Wakefield is undoubtedly one of the finest early cabbages in existence. The heads are good size, conical in shape, solid, and have few outside leaves. Matures about a week later than Selected Wakefield. Pkt. 10 cts., oz. 25 cts.,  $\frac{1}{4}$  lb. 70 cts., lb. \$2.50. Postpaid.

**All Seasons** A splendid strain of Flat Dutch originated by a Long Island market gardener and familiar in many places under the name of "Vandegaw." Pkt. 10 cts., oz. 25 cts.,  $\frac{1}{4}$  lb. 65 cts., lb. \$2.25. Postpaid.

**Succession** A well-known sort, very solid and uniform in heading, but we prefer Tait's Early Summer or Tait's Midsummer for second early cabbages. Pkt. 10 cts., oz. 25 cts.,  $\frac{1}{4}$  lb. 65 cts., lb. \$2.25. Postpaid.

**Louisville Drumhead** There is no cabbage of the Drumhead type which can be compared with this beautiful representative, its shape, color, firmness, and excellent table qualities giving it easily the very first place. Pkt. 10 cts., oz. 25 cts.,  $\frac{1}{4}$  lb. 65 cts., lb. \$2.25. Postpaid.

**Danish Ballhead** A distinct round head solid cabbage, with short stem, often called "Hollander." It requires a strong deep soil and cool climate to bring it to perfection. Pkt. 10 cts., oz. 30 cts.,  $\frac{1}{4}$  lb. 90 cts., lb. \$3.00. Postpaid.

**Tait's Thorobred Winter King** We believe this to be the hardiest of all cabbages, not only in resisting marvelously the extremes of heat and cold, or drought and moisture, but showing itself apparently immune to the various fungous diseases so destructive to cabbage. The stem is short, with a hard skin and the dark bluish leaves are noticeable for their thickness and firm texture. The head, although large, is not too large to pack well, is nearly flat, solid and of excellent quality. The "Winter King" may be successfully used for late summer, but it is especially recommended for the season after which it has been named. Pkt. 10 cts., oz. 30 cts.,  $\frac{1}{4}$  lb. 90 cts., lb. \$3.00. Postpaid.

**Large Late Flat Dutch** A splendid variety for fall or winter use, producing immense heads of the finest quality; splendid keeper. Pkt. 10 cts., oz. 25 cts.,  $\frac{1}{4}$  lb. 65 cts., lb. \$2.25. Postpaid.

**Perfection Drumhead Savoy** Truckers will find in this Savoy the finest strain of that type, the heads being globular, very uniform and firm, with every leaf densely savoyed. It is of delicate flavor, almost like cauliflower, and is excellent for winter use. A splendid home garden variety when sown in mid-summer. Pkt. 10 cts., oz. 25 cts.,  $\frac{1}{4}$  lb. 70 cts., lb. \$2.50. Postpaid.

**Mammoth Red Rock** Probably the finest red cabbage. It is medium early, of fine quality, has few outside leaves, and is of the darkest red color. Pkt. 10 cts., oz. 30 cts.,  $\frac{1}{4}$  lb. 90 cts., lb. \$3.00. Postpaid.

## KALE

### Tait's Thorobred Dwarf Blue Curled

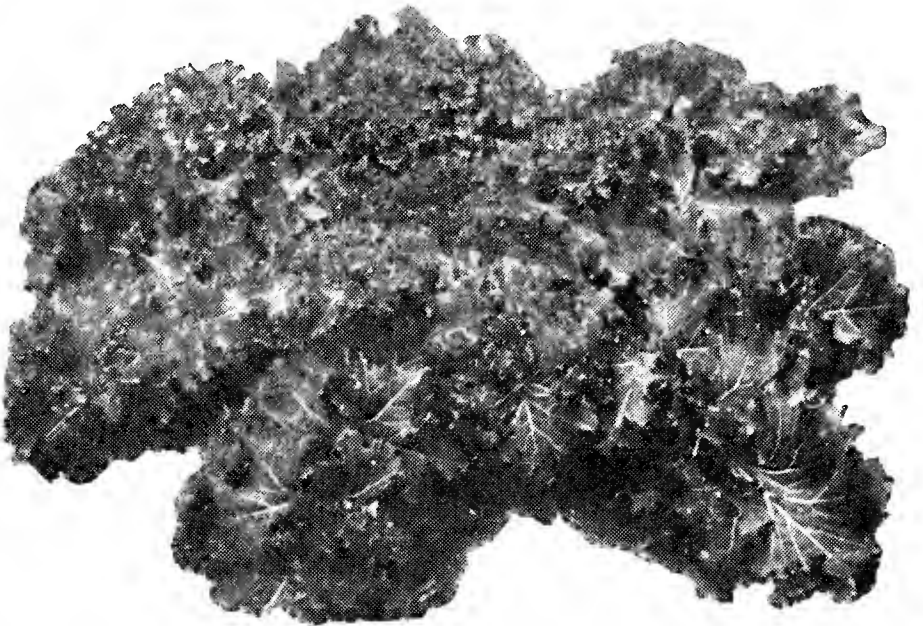
**Scotch** The leaves of this handsome Kale, as may be implied from the name, are of a dark, bluish-green, which is very much more attractive than the bright green of the Dwarf Green variety. The leaves will also stand for a longer time in the spring before turning yellow, and usually command a higher price in all markets. Those who sow Scotch Kale largely should use this sort. Pkt. 5 cts., oz. 10 cts.,  $\frac{1}{4}$  lb. 30 cts., lb. 85 cts. Postpaid.

### Tait's Thorobred Dwarf Green Curled

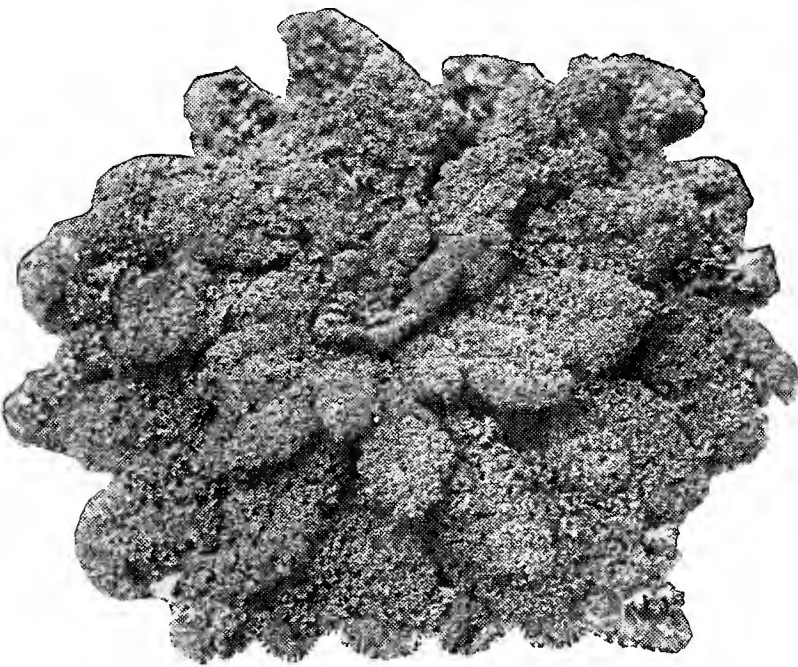
**Scotch** A bright green kale, which is grown extensively in the South for shipping during the winter. It is exceedingly dwarf, averaging little more than a foot in height and leaves are intricately and most beautifully curled. Pkt. 5 cts., oz. 10 cts.,  $\frac{1}{4}$  lb. 20 cts., lb. 70 cts. Postpaid.

### Tait's Thorobred Favorite Curled

**Siberian** When we introduced this now celebrated Green Curled Kale it at once demonstrated its superiority to all strains then in cultivation, and was promptly adopted by all the best growers. It is hardy, very productive, grows rapidly and is very slow running to seed in the spring. The shape and curling of the leaf give it the appearance of an immense feather, and like the Scotch, it retains its stiffness a long time after being cut. Pkt. 5 cts., oz. 10 cts.,  $\frac{1}{4}$  lb. 20 cts., lb. 70 cts. Postpaid.



Tait's Thorobred Favorite Curled Siberian Kale.



Tait's Thorobred Dwarf Blue Curled Scotch Kale.

**Tait's Thorobred Plain** Gardeners who are unacquainted with this most useful salad, sometimes called Norfolk Kale or Spring Sprouts, have a pleasant surprise in store. While young it is very sweet and far more tender than any kind of kale, and the growth is so rapid that leaves may be cut in three weeks from seeding. Although usually sown in the spring, it may be sown in the early or even late fall as it endures cold perfectly. Oz. 5 cts.,  $\frac{1}{4}$  lb. 10 cts., lb. 30 cts. Postpaid.

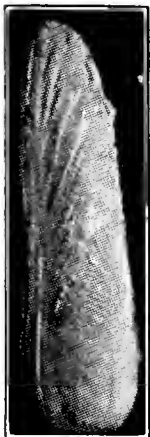
## MUSTARD

**Fordhook Fancy** No other kind is nearly so attractive, and it is also the most productive, making an extraordinary amount of foliage. Pkt. 5 cts., oz. 10 cts.,  $\frac{1}{4}$  lb. 20 cts., lb. 65 cts. Postpaid.

**Giant Southern Curled** A favorite in the South, growing very large, with a beautiful curled leaf. Tender and of especially good flavor. Pkt. 5 cts., oz. 10 cts.,  $\frac{1}{4}$  lb. 20 cts., lb. 65 cts. Postpaid.

**Japanese Spinach Mustard** Also known as "Tendergreen." A delicious quick growing vegetable of oriental origin with large oblong dark green leaves and small center rib. It can be sown nearly every month in the year in the South. Pkt. 5 cts., oz. 10 cts.,  $\frac{1}{4}$  lb. 25 cts., lb. 75 cts. Postpaid.

## CHINESE or CELERY CABBAGE



Imp. Pekin.

Somewhat resembles our Cos Lettuce, and is a very popular vegetable with the Chinese, being used both raw and boiled. It does best as a fall crop.

**WONG BOK**—A short, broader type than Chokurei, forming a tightly closed head. This is a very popular and widely used sort. Pkt. 10 cts., oz. 25 cts.,  $\frac{1}{4}$  lb. 70 cts., lb. \$2.50. Postpaid.



Wong Bok.

**CHOKUREI**—Listed by many seedsmen under the name of "Pe-Tsai." The leaves are narrow and upright with broad spines. A sure-header. Pkt. 10 cts., oz. 25 cts.,  $\frac{1}{4}$  lb. 70 cts., lb. \$2.50. Postpaid.

**IMPROVED PEKIN**—A variety sometimes called Chihili. It often produces upright slender heads 18 inches high, and not over 3 inches wide. Its appearance is quite different from other strains of this vegetable. Pkt. 10 cts., oz. 30 cts.,  $\frac{1}{4}$  lb. 90 cts., lb. \$3.00. Postpaid.



Chokurei Pe-Tsai

## LETTUCE



Tait's Thorobred White Boston Lettuce

**Tait's Thorobred Earliest of All** Growers of lettuce, either for pleasure or profit, will find it to their advantage to have a portion of their crop in this variety. As the name implies, it is the earliest heading lettuce in cultivation, and does equally as well under glass or in the open ground. The heads are of medium size, fold tightly, and are a rich creamy tint, the outside leaves being similar in color to those of the Big Boston. Pkt. 10 cts., oz. 20 cts.,  $\frac{1}{4}$  lb. 60 cts., lb. \$1.75. Postpaid.

**Tait's Thorobred Big Boston** A favorite variety along the entire Southern Seacoast. The head is beautifully blanching, and in crisp tenderness is all that could be desired. Pkt. 10 cts., oz. 15 cts.,  $\frac{1}{4}$  lb. 35 cts., lb. \$1.25. Postpaid.

**Tait's Thorobred White Boston** Those who grow Big Boston Lettuce will appreciate this handsome variety. It is a pure line selection from "White Boston" without any red on the leaf edge. It has been carefully bred for uniformity in size and maturity. Pkt. 10 cts., oz. 20 cts.,  $\frac{1}{4}$  lb. 65 cts., lb. \$2.00. Postpaid.

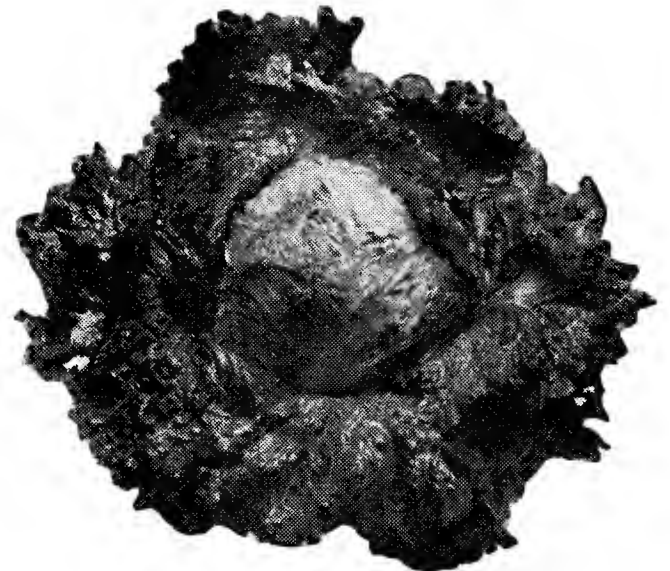
**Unrivalled** A large, light, bright green heading lettuce similar in habit of plant to Big Boston, but a trifle earlier maturing and having no red or bronze shadings on the leaves. Sometimes called Improved Big Boston, Champion of All, and Cabbage Head. Not so good as Tait's Giant White Forcing. Pkt. 10 cts., oz. 20 cts.,  $\frac{1}{4}$  lb. 60 cts., lb. \$1.75. Postpaid.

**Summer Iceberg** A curled or crisp heading sort similar to Hanson. It is good for either forcing or outdoor culture. Principally used for spring sowing. Pkt. 10 cts., oz. 20 cts.,  $\frac{1}{4}$  lb. 40 cts., lb. \$1.25. Postpaid.

**New York or Wonderful No. 12** A single plant selection that matures about five days earlier than the old stock. The heads are flat, large, solid, and uniform in maturing. Pkt. 10 cts., oz. 20 cts.,  $\frac{1}{4}$  lb. 60 cts., lb. \$1.75. Postpaid.

**New York or Wonderful No. 5084** A single plant selection that the N. C. Agricultural College has found desirable for North Carolina lettuce growers. The heads are flat, large, solid, and uniform in maturing. Pkt. 10 cts., oz. 20 cts.,  $\frac{1}{4}$  lb. 60 cts., lb. \$1.75. Postpaid.

**New York or Wonderful** This variety is also often sold under the name of Los Angeles Market Iceberg, and is becoming more popular in the South and East each season. It is a curled and crisp heading variety, medium large, dark green and slightly curled on the edges, while the extra large head is well blanching and firm. Good for either spring, summer or fall sowing. Slow in running to seed. Pkt. 10 cts., oz. 20 cts.,  $\frac{1}{4}$  lb. 60 cts., lb. \$1.75. Postpaid.



New York or Wonderful Lettuce No. 12

**Grand Rapids** This loose leaved variety has become a favorite everywhere, especially in the West, but must not be used where a head lettuce is wanted. Of not the best quality when grown out of doors, but under glass it becomes tender and sweet. The leaves are light green, free from any brownish markings and are merely bunched together. The edges being daintily fringed, it is very decorative for garnishing, and is largely used for that purpose. Pkt. 10 cts., oz. 15 cts.,  $\frac{1}{4}$  lb. 35 cts., lb. \$1.15. Postpaid.



Tait's Thorobred Norfolk Cos Lettuce.

## ROMAINE or COS LETTUCE

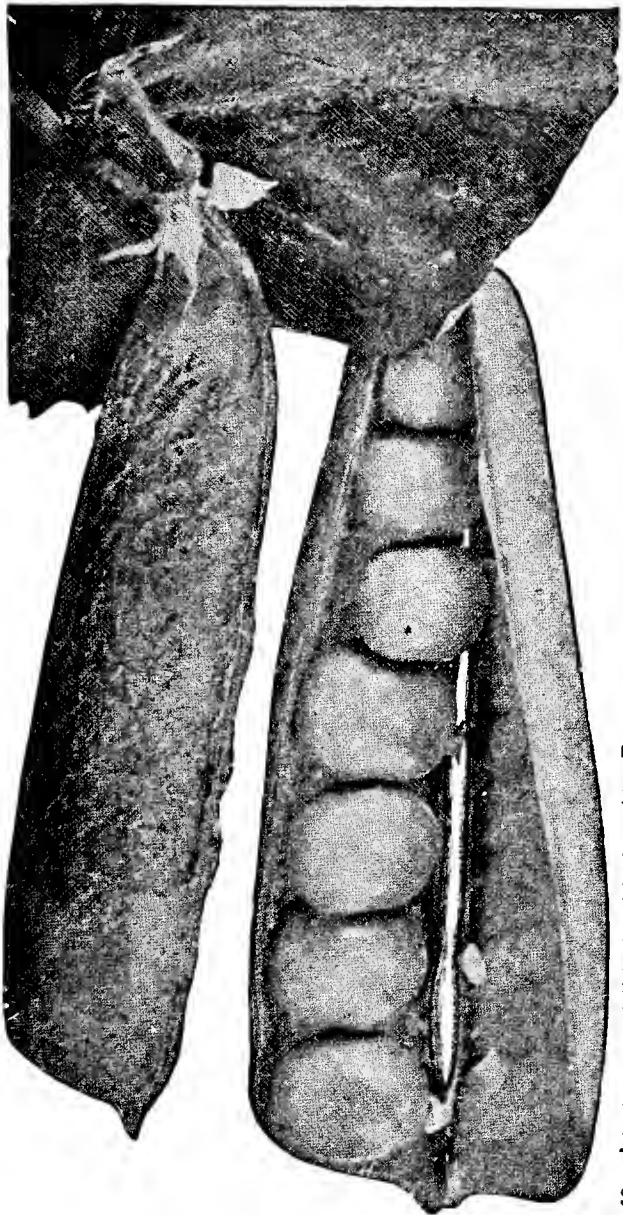
**Tait's Thorobred Norfolk** A splendid variety. The leaves are a rich dark green color which make it unusually attractive and of the finest quality. It is hardy and stands up well under adverse weather conditions. Pkt. 10 cts., oz. 15 cts.,  $\frac{1}{4}$  lb. 50 cts., lb. \$1.65. Postpaid.

**Giant White** This variety forms a large light green plant with the head well folded and quite firm. Pkt. 10 cts., oz. 15 cts.,  $\frac{1}{4}$  lb. 35 cts., lb. \$1.25. Postpaid.



## PEAS

**Thomas Laxton** The pods of our stock of this popular early pea are very dark green and we consider it one of the best extra early peas for market gardeners. In our judgment there can be no question as to its having a strong constitution, and therefore suffers but little in bad weather. Unlike most wrinkled peas, it germinates vigorously, and the vine is robust, hardy, maturing the crop with great uniformity. The pods, although shorter than those of Laxtonian, owing to their bluntness, really contain as many peas, and their dark green color adds materially to the market value; the peas themselves are very large and possess the luscious sweetness of the true sugar peas. Height, three feet. Pkt. 10 cts., ½ lb. 20 cts., lb. 30 cts., 2 lbs. 55 cts., 5 lbs. \$1.25, 10 lbs. \$2.15. Postpaid. Not prepaid, 25 lbs. \$3.75, 50 lbs. \$7.00.



Dark Podded Thomas Laxton Peas

**Pilot** Earlier and hardier than the Thomas Laxton and with longer pods, this is a splendid early sort and on account of its hardiness it can be planted in the spring three weeks before Thomas Laxton, and the quality is nearly as good. The vines are vigorous and bear throughout the length of the stem a large proportion of the pods in pairs. Height, three feet. Pkt. 10 cts., ½ lb. 20 cts., 1 lb. 30 cts., 2 lbs. 55 cts., 5 lbs. \$1.25, 10 lbs. \$2.15. Postpaid. Not prepaid, 25 lbs. \$3.75, 50 lbs. \$7.00.

**Laxton's Progress** Very Early—Dwarf—Largest Pods. The earliest and by far the best in quality of the large-podded dwarf sorts. It also is the heaviest yielder in its class. Laxton's Progress is an improvement upon the well known Laxtonian, and is superior as a market sort. The vines grow 15 to 18 inches high and the pods are 4 to 4½ inches long, of a deep green color, well filled with dark green peas of the finest quality. Pkt. 10 cts., ½ lb. 20 cts., lb. 35 cts., 2 lbs. 65 cts., 5 lbs. \$1.35, 10 lbs. \$2.35. Postpaid. Not prepaid, 25 lbs. \$4.00, 50 lbs. \$7.75.

**Laxtonian** Our stock of this splendid dwarf early pea has very dark green pods. The pods are large and unusually well filled with peas of splendid flavor. The vine grows about fifteen inches high and in appearance resembles closely Blue Bantam and Hundredfold. Pkt. 10 cts., ½ lb. 20 cts., lb. 35 cts., 2 lbs. 65 cts., 5 lbs. \$1.35, 10 lbs. \$2.35. Postpaid. Not prepaid, 25 lbs. \$4.00, 50 lbs. \$7.75.

**Prolific Early Market** A smooth, white seeded variety still used by a few growers who have found it dependable. Height, 2½ feet. Pkt. 10 cts., ½ lb. 20 cts., lb. 30 cts., 2 lbs. 50 cts., 5 lbs. \$1.10, 10 lbs. \$1.95. Postpaid. Not prepaid, 25 lbs. \$3.25, 50 lbs. \$6.25.

## PARSLEY

**Tait's Thorobred Curled Scotch** For either market or the home garden we strongly recommend this variety. The color is very dark green and the leaves are most beautifully curled. Pkt. 10 cts., oz. 15 cts., ¼ lb. 25 cts., lb. 90 cts. Postpaid.

**Plain** A strong, hardy plant, which is excellent for seasoning, but not so pretty for garnishing as the curled varieties. Pkt. 5 cts., oz. 10 cts., ¼ lb. 20 cts., lb. 75 cts. Postpaid.

**Hamburg** A rooted variety that in growth resembles parsnips, and used for flavoring soups. Pkt. 10 cts., oz. 15 cts., ¼ lb. 45 cts., lb. \$1.50. Postpaid.

## POTATOES

**Irish Cobbler** A favorite variety for the fall crop, but will not give as heavy a yield as the McCormick or Hobo.

PRINCE EDWARD ISLAND CERTIFIED, 5 lbs. 65 cts., 10 lbs. \$1.20, 15 lbs. \$1.60. Delivered. Not prepaid, 1 bu. \$2.50, 150-lb. sack \$6.00.

MAINE CERTIFIED, 5 lbs. 65 cts., 10 lbs. \$1.20, 15 lbs. \$1.60. Delivered. Not prepaid, 1 bu. \$2.50, 150-lb. sack \$6.00.

**Green Mountain** Large oval-shaped potato of exceptionally good table quality. Maine Selected, 5 lbs. 65 cts., 10 lbs. \$1.20, 15 lbs. \$1.50. Delivered. Not prepaid, 1 bu. \$2.50, 150-lb. sack \$6.00.

**McCormick** Sometimes called "Hoosier." It resembles our Peach Blow, except that the eye is pink. Generally makes a heavier yield in the fall than any other sort. 5 lbs. 65 cts., 10 lbs. \$1.20, 15 lbs. \$1.60. Delivered. Not prepaid, 1 bu. \$2.50, 150-lb. sack \$6.00.

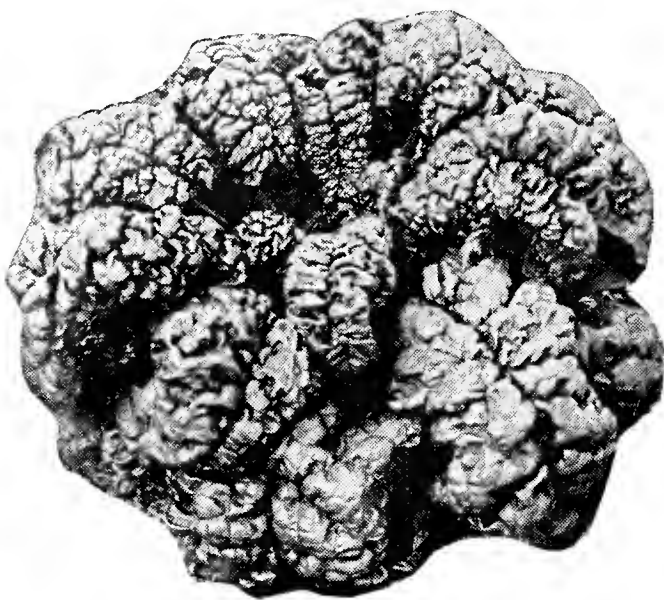
**Rehoboth** Called Hobo for short—this Potato resembles somewhat the Irish Cobbler, and is of better quality, and yields well. 5 lbs. 65 cts., 10 lbs. \$1.20, 15 lbs. \$1.60. Delivered. Not prepaid, 1 bu. \$2.50, 150-lb. sack \$6.00.

## RADISH

**Tait's Thorobred Scarlet Globe** Radish is one of our specialties, and our Market Gardener's strain of this popular variety is unsurpassed. It is one of the most desirable radishes for field culture. It is very attractive in both shape and color, being a bright, transparent red and very smooth-skinned. Pkt. 5 cts., oz. 10 cts., ¼ lb. 20 cts., lb. 75 cts. Postpaid.

**Celestial** A variety which is really excellent for all seasons, and particularly adapted to winter use. It is about the same shape and size as the well-known Long Black Spanish, but is much superior to it in every respect, being pure white, very smooth and thin skinned, juicy and wonderfully brittle. Pkt. 5 cts., oz. 10 cts., ¼ lb. 25 cts., lb. 85 cts. Postpaid.

## SPINACH



Re-Selected Norfolk Bloomsdale Spinach.

### TAIT'S THOROBRED RE-SELECTED NORFOLK BLOOMSDALE SAVOY

The standard spinach for Southern market gardeners. The leaves are of the darkest green, and curled to perfection, retaining their peculiar crispness long after being cut and packed. As we are among the largest growers of spinach seed in the United States, we can, and invariably do, offer it at as low a price as is consistent with the quality of our seed. Oz. 5 cts., ¼ lb. 15 cts., lb. 35 cts. Postpaid.

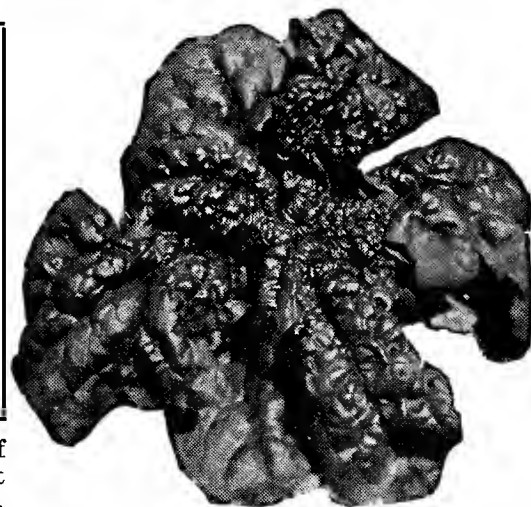
**Nobel—Giant Leaved** An improved strain of Viroflay Spinach. It combines the rapid growing habit of the early varieties with the long standing quality of varieties like King of Denmark and Juliana, and produces the largest plants of any smooth leaf variety yet introduced. The medium green leaves are rounded at the tip, slightly crumpled, but not savoyed, and are especially succulent and tender. On account of its splendid quality and productiveness, it is recommended for home gardens, local market, and canners. Oz. 5 cts., ¼ lb. 20 cts., lb. 50 cts. Postpaid.

**Tait's Thorobred Long Standing Bloomsdale Savoy** This variety, as its name implies, has been bred for its long standing qualities. The color is very dark green, the leaves remarkably savoyed, and it will remain in marketable condition in the spring two weeks longer than the ordinary Bloomsdale before going to seed. Oz. 5 cts., ¼ lb. 15 cts., lb. 40 cts. Postpaid.

**Princess Juliana** An improved late seeding spinach and one of the best varieties for spring sowing for local markets, as it is of splendid quality, very productive and slow to shoot to seed. The leaves are slightly savoyed and quite dark in color. For shipping it is not so good as Long Standing Bloomsdale Savoy. Oz. 5 cts., ¼ lb. 15 cts., lb. 40 cts. Postpaid.

### TAIT'S VIRGINIA YELLOWS RESISTANT SAVOY

For many years growers of spinach around Norfolk have lost considerable money each season because of a disease in spinach commonly called "Spinach Blight," which often destroys whole crops. Several years ago the Virginia Truck Experiment Station at Norfolk began experiments to get rid of this disease, and after six years of hard work succeeded, by hybridization, in breeding a spinach that was practically "Blight Resistant," and which we have named Virginia Savoy. This variety should be used in preference to ordinary Bloomsdale Savoy in sections where "blight" is prevalent. Oz. 5 cts., ¼ lb. 15 cts., lb. 35 cts. Postpaid.



Virginia Savoy Spinach.

**King of Denmark** A popular Long Standing variety. It is medium early, of rapid growth, resembling somewhat Long Standing, but the leaves are more savoyed, and of a dark green color. Slow in running to seed. Oz. 5 cts., ¼ lb. 15 cts., lb. 40 cts. Postpaid.



Old Dominion Spinach.

**New Zealand** A tall spreading plant with numerous side shoots, and although called "Spinach," is not botanically related to the Spinach Family, but is a good substitute. It grows vigorously during warm weather, producing an astonishing amount of foliage, new leaves promptly taking the place of those that are cut. It will not stand frost, and the seed should be soaked over night before planting. Pkt. 5 cts., oz. 10 cts., ¼ lb. 25 cts., lb. 75 cts. Postpaid.

### OLD DOMINION YELLOWS RESISTANT LATE SEEDING SAVOY

A late seeding hybrid Spinach developed at the Virginia Truck Experiment Station at Norfolk by crossing Virginia Savoy with King of Denmark. It possess the blight-resistance of Virginia Savoy, and the late-seeding characteristic of King of Denmark. The foliage is dark bluish green, and evenly savoyed except at leaf tips. The growth is compact and flatter than that of Virginia Savoy, and it is two weeks later in shooting to seed. It should be sown only in the late fall or early spring for spring crop in areas where spinach "blight" is prevalent. As it makes a slower growth in the fall than does the Virginia Savoy, it is not recommended for the fall crop. Oz. 5 cts., ¼ lb. 20 cts., lb. 50 cts. Postpaid.

SPINACH MUSTARD, See Page 5.

## TURNIP

### WITH WHITE FLESH

**White Milan** An extra early white turnip with smooth flat roots. Pkt. 5 cts., oz. 10 cts., ¼ lb. 25 cts., lb. 75 cts. Postpaid.

**Purple Top Milan** Identical with the White Milan, except that the skin at the top of the root is purple. Pkt. 5 cts., oz. 10 cts., ¼ lb. 25 cts., lb. 75 cts. Postpaid.

**Snowball** A beautiful early white globe-shaped variety remaining sweet so long as it is growing. Pkt. 5 cts., oz. 10 cts., ¼ lb. 20 cts., lb. 60 cts. Postpaid.

**Purple Top Flat Strap Leaf** A popular flat variety until the introduction of the Purple Top Globe. Pkt. 5 cts., oz. 10 cts., ¼ lb. 20 cts., lb. 50 cts. Postpaid.

### Tait's Thorobred Purple Top

**Globe** The most popular turnip for market or the garden. It is a large, rapid growing sort, globular shaped, with pure white flesh of splendid quality. The skin is purple at the top, and white at the bottom, giving it a most attractive appearance. Pkt. 5 cts., oz. 10 cts., ¼ lb. 20 cts., lb. 55 cts. Postpaid.

**Large White Norfolk** A standard white globe shaped variety. For stock feeding, but can be used for table when small. In the vicinity of Norfolk, the leaves of this variety are used for greens in preference to Seven Top. Pkt. 5 cts., oz. 10 cts., ¼ lb. 20 cts., lb. 50 cts. Postpaid.

**Pomeranian White Globe** This splendid popular globe-shaped variety is useful either for table or stock. The leaves make "greens" of excellent quality, and are preferred by many to those of the Seven Top. Pkt. 5 cts., oz. 10 cts., ¼ lb. 20 cts., lb. 50 cts. Postpaid.

**White French or Rock** One of the very best white, globe-shaped turnips. The flesh is fine grained, sweet, and so solid that it has been appropriately named "White Rock." Pkt. 5 cts., oz. 10 cts., ¼ lb. 20 cts., lb. 60 cts. Postpaid.



Shogrow Turnip

**White Egg** A splendid quick growing egg-shaped variety, with pure white skin. Pkt. 5 cts., oz. 10 cts., ¼ lb. 20 cts., lb. 60 cts. Postpaid.

**Cow Horn** A long white variety with a suggestion of green at the top. Grows half above the ground, and is usually crooked. The quality, however, is good, and it keeps well. Pkt. 5 cts., oz. 10 cts., ¼ lb. 20 cts., lb. 60 cts. Postpaid.

**Shogrow** A desirable variety from Japan that can be used for either "greens" or roots. The leaves are bright green and grow up-right, producing semi-globe white roots of good quality. Highly resistant to both insects and "blight," and will grow in the hottest and driest weather. Pkt. 5 cts., oz. 10 cts., ¼ lb. 20 cts., lb. 65 cts. Postpaid.

**Southern Prize or Dixie** Hardy and needs no protection. Principally grown only for winter or spring "greens." Pkt. 5 cts., oz. 10 cts., ¼ lb. 15 cts., lb. 45 cts. Postpaid.

**Seven Top** Like the Southern Prize or Dixie, this variety is grown only for "greens." Pkt. 5 cts., oz. 10 cts., ¼ lb. 15 cts., lb. 45 cts. Postpaid.

**Hanover** A very desirable white flesh variety of good quality, the tops of which make excellent "greens." Pkt. 5 cts., oz. 10 cts., ¼ lb. 20 cts., lb. 60 cts. Postpaid.

### WITH YELLOW FLESH

**Amber Globe** A beautiful yellow flesh globe variety, with purple top. A splendid keeper. Pkt. 5 cts., oz. 10 cts., ¼ lb. 20 cts., lb. 55 cts. Postpaid.

**Yellow Aberdeen** A splendid winter keeper. Excellent for both table and stock. The roots are globe shaped, yellow, with purple tops, and of slow growth. Pkt. 5 cts., oz. 10 cts., ¼ lb. 20 cts., lb. 55 cts. Postpaid.

**Golden Ball** A medium size turnip of globular shape, and orange colored flesh. While not large, is of fine quality and keeps well. Pkt. 5 cts., oz. 10 cts., ¼ lb. 20 cts., lb. 55 cts. Postpaid.

**Mixed Turnips** A mixture of turnips and Rutabagas, giving a variety of turnips, as well as turnip "greens" with one sowing. Pkt. 5 cts., oz. 10 cts., ¼ lb. 20 cts., lb. 50 cts. Postpaid.

## RUTABAGA WITH YELLOW FLESH

### Tait's Thorobred Purple Top

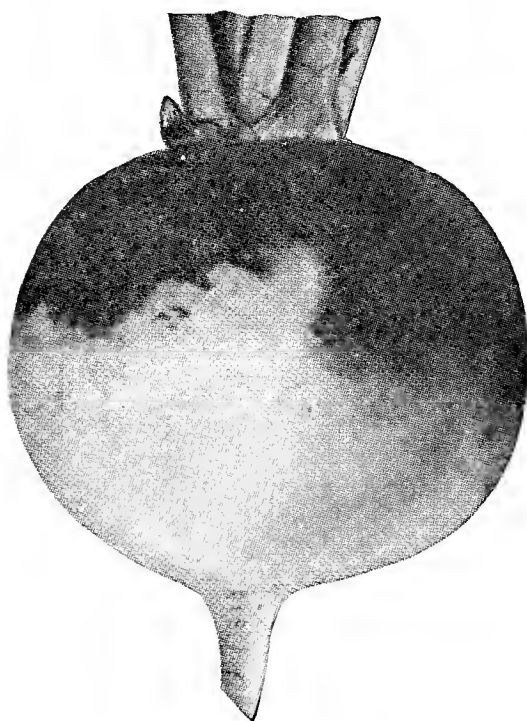
A superior strain of Long Island Rutabaga. The roots are globular in shape, with small neck, and the skin is pale yellow with purple top. A very popular variety. Pkt. 5 cts., oz. 10 cts., ¼ lb. 20 cts., lb. 55 cts. Postpaid.

### Tait's Thorobred Globe Shaped

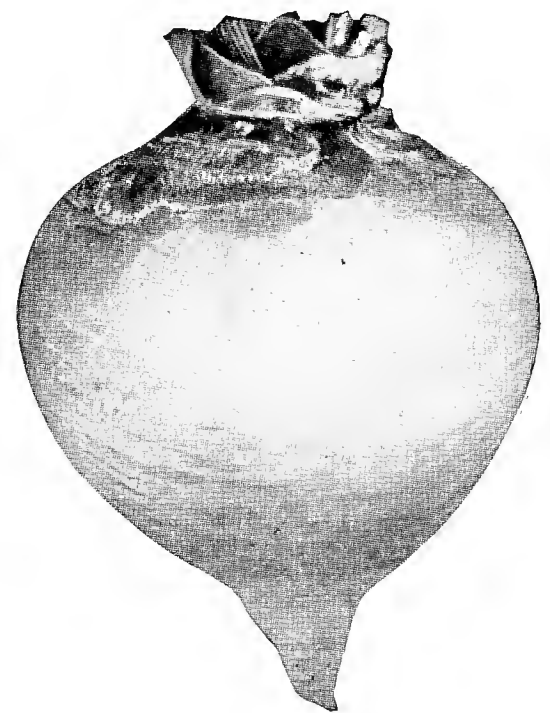
This splendid rutabaga is practically neckless. The yellow roots have a purple top, are globe shaped and smooth. The flesh is yellow, fine grained, solid and sweet. Pkt. 5 cts., oz. 10 cts., ¼ lb. 20 cts., lb. 65 cts. Postpaid.

### WITH WHITE FLESH

**Breadstone** A splendid white rutabaga with fine grained flesh of a most delicate flavor. The root is oval shaped, and practically neckless. Very early. Pkt. 5 cts., oz. 10 cts., ¼ lb. 20 cts., lb. 65 cts. Postpaid.



Tait's Thorobred Purple Top Globe Turnip



Tait's Thorobred Globe Shape Rutabaga

# TAIT'S MAJESTIC HYACINTHS

Although less graceful than the lily, the Hyacinth is still Queen of the Dutch Bulbs, and is the most familiar of them all. It is perfect in form, of beautiful coloring, and carries its burden of fragrant bells with a stateliness characteristic of no other small flower. It does equally as well indoors as in the garden, and can be grown in fiber, water, sand, or soil. When grown in sand or soil it should be enriched with bone meal or sheep manure. For indoor blooming, it is best to plant the bulbs at intervals of ten days or two weeks, for a succession of bloom. The bulbs should be planted from 4 to 6 inches deep and about 6 inches apart.

For outdoor culture in the latitude of Norfolk, bulbs should be planted during October and November, as cool weather is necessary to deter top growth, which generally starts from four to six weeks after root growth develops, and the tender tops are likely to be injured if they appear above ground before early spring. (For depth of planting and distance apart, see chart.)

Bulbs will grow in almost any good garden soil, but to attain their best in size and brilliancy of bloom, the soil should be deeply spaded and well broken up, and then enriched with a liberal application of Bone Meal and Sheep Manure mixed half and half, or Vigoro. The fertilizer should be thoroughly dug in with the soil, so that the soil and fertilizer will become well mixed.

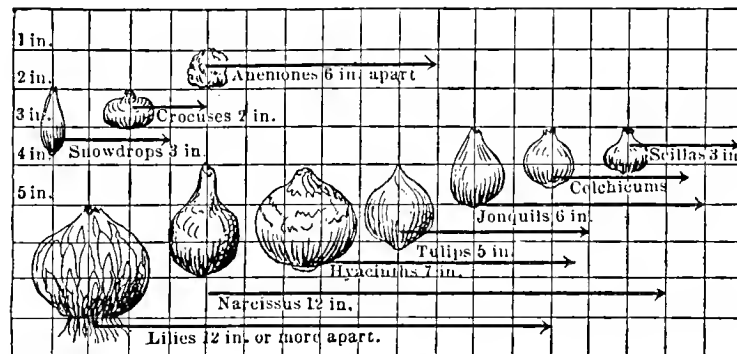


Chart for Depth and Distance to Plant Bulbs.

## 1st SIZE NAMED HYACINTHS

### MAMMOTH EXHIBITION BULBS

- Grand Maitre.** Deep lavender-blue; large bells. Very popular.
- King of the Blues.** Brilliant indigo-blue. Flowers of the largest size.
- Menelik.** Dark purple, almost black.
- Perle Brilliante.** A pleasing shade of light blue; large bells; perfect shape.
- Queen of the Blues.** Light porcelain.
- Gertrude.** Dark pink; large flowers.
- Lady Derby.** Light rose-pink; extra fine.
- La Victoire.** Bright red; one of the best.
- Moreno.** Exquisite shade of pink; early.
- Queen of the Pinks.** Beautiful rosy pink, large bells.
- City of Haarlem.** Golden yellow; flower large and well formed.
- L'Innocence.** Pure white. Large Spikes. A splendid sort.

### ANY OF THE ABOVE VARIETIES

Single bulb 15 cts., 10 bulbs \$1.25, 100 bulbs \$9.00. Delivered.

## 2nd SIZE NAMED HYACINTHS

### EQUALLY AS GOOD AS FIRST SIZE BULBS, AND COST LESS

We can furnish all the above named varieties in 2nd sizes. The second size Hyacinths are just a little smaller than our Exhibition size, but as they bear equally as large flowers and are considerably cheaper we recommend them, and many of our customers prefer them.

### ANY OF THE ABOVE VARIETIES IN 2nd SIZE BULBS

Single bulb 12 cts., 10 bulbs \$1.00, 100 bulbs \$7.00. Delivered.

## Tait's Thorobred Mixture

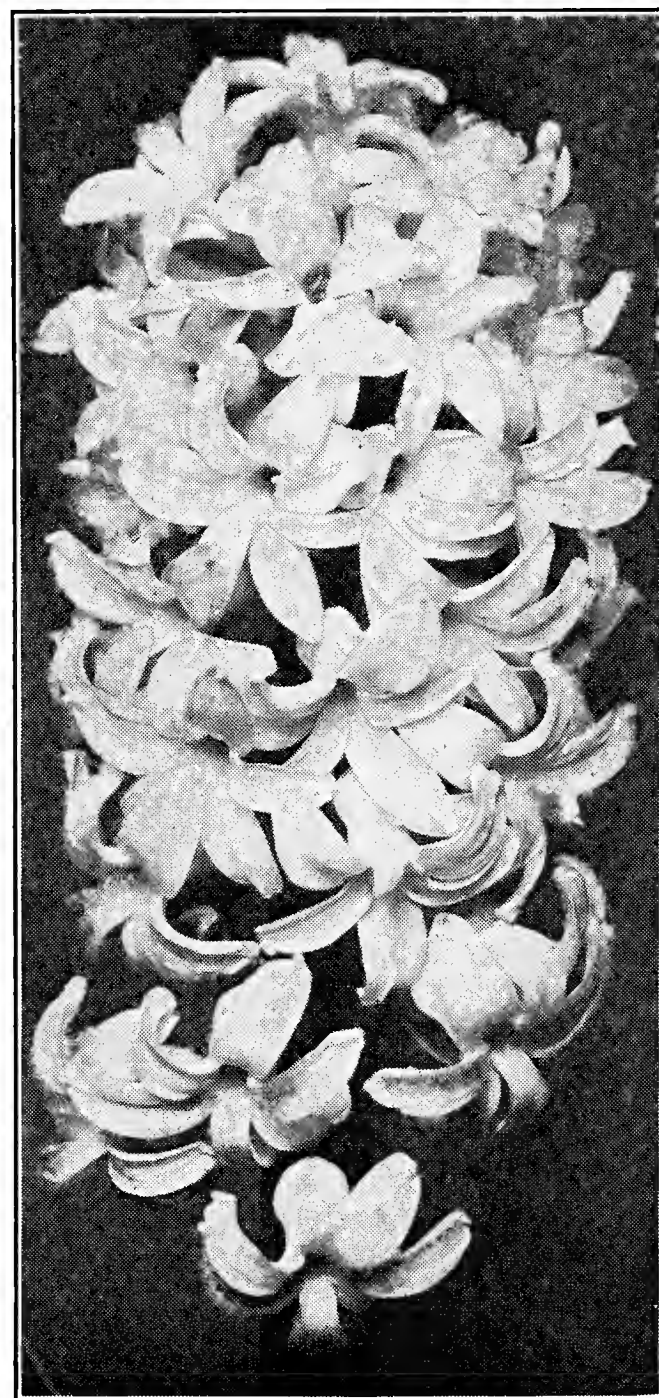
Made by ourselves out of named sorts, and all colors, and well adapted for growing in pots or beds. Without doubt the best mixture of Hyacinths offered at the price. Single bulb 10 cts., 10 bulbs 75c, 100 bulbs \$5.00. Delivered.

## Tait's Gorgeous Mixture

This bedding mixture of different colored hyacinths is priced low; the bulbs should be purchased in large quantities for massed color effects. Single bulb 8 cts., 10 bulbs 60 cts., 100 bulbs \$4.00. Delivered.

## WHITE ROMAN HYACINTHS

Earlier than the Dutch Hyacinths, and more graceful, as the white flowers are not in clusters. Our bulbs are French grown, and are far superior to those grown in Holland. Please note that these are for indoor blooming only. Single bulb 13 cts., 10 bulbs \$1.25, 100 bulbs \$10.00. Delivered.



2nd Size Named Hyacinth  
Queen of the Pinks

BEST BY TEST FOR OVER SIXTY YEARS

## TAIT'S SUPERB NARCISSUS

Few bulbous flowers are more graceful than the Daffodils. While they do not possess the gorgeous colorings of the Darwin and Cottage tulips, the fact that they come into bloom in April and precede the tulips, suggests their use. You can plant Daffodils in scattered clumps about the garden, and arrange them in borders. Daffodils can be grown in any ordinary garden soil, enriched with bone meal and sheep manure. Plant 6 inches deep, 6 inches apart.

### Single Varieties

**EMPEROR.** Huge yellow flowers upon long stems. One of the best. 10 bulbs \$1.00, 100 bulbs \$6.00. Delivered.

**EMPRESS.** Rich yellow trumpet; the perianth (the petals at right angles to trumpet) is sulphur-white. 10 bulbs \$1.00, 100 bulbs \$7.00. Delivered.

**KING ALFRED.** (New.) One of the most beautiful sorts in our list. The largest and finest golden yellow Giant Trumpet variety. 10 bulbs \$1.25, 100 bulbs \$9.00. Delivered.

**GOLDEN SPUR.** Beautiful large yellow flowers. 10 bulbs \$1.00, 100 bulbs \$6.00. Delivered.

**SIR WATKIN.** Bright primrose-yellow perianth, with large, well-formed cup. 10 bulbs \$1.00, 100 bulbs \$6.00. Delivered.

### Crocus

Just imagine a fresh green lawn with yellow and white and blue Crocuses peeping up through the sod and opening their flowers to the spring sunshine. To be most effective, Crocuses should be used in large quantities, and even a small lawn can use five hundred. Just try them this year. Plant 2 inches deep and 3 inches apart.

10 bulbs 35 cts., 100 bulbs \$2.25, delivered, except where noted.

**MAXIMILIAN.** Brilliant blue.

**MONT BLANC.** Pure white.

**SIR WALTER SCOTT.** White with purple stripings.

**YELLOW KING.** Bright yellow. 10 bulbs 40 cts., 100 bulbs \$2.50, delivered.

**MIXTURE OF DIFFERENT COLORS.** 10 bulbs 20 cts., 100 bulbs \$2.00, delivered.

### Chinese Sacred Lily

Blooms much like the Paper-White Narcissus, but with pronounced yellow centers. The plant makes a stronger growth than the Paper-White Narcissus, but the bulbs are treated in the same way—set in pebbles and water. Single bulbs 20 cts. each, 10 bulbs \$1.75, delivered.

### Freesia

Very popular for indoor blooming, and can be grown almost as readily as Paper-White Narcissus. There is only one important point to remember—they must have good drainage.

**PURITY.** Snow-white flowers blotched with yellow; rather fragrant. Large bulbs. 10 bulbs 50 cts., 100 bulbs \$3.75, delivered.

**RAINBOW MIXTURE.** Shades of pink, purple, lilac, blue, and orange. 10 bulbs 60 cts., 100 bulbs \$4.50, delivered.

### Lily-of-the-Valley

These are most effective when planted irregularly in small groups. Place the crowns about 2 inches below the surface. The flowers will be larger and finer if given an occasional dressing of well-rotted manure. 10 pips 50 cts., 100 pips \$4.50, delivered.



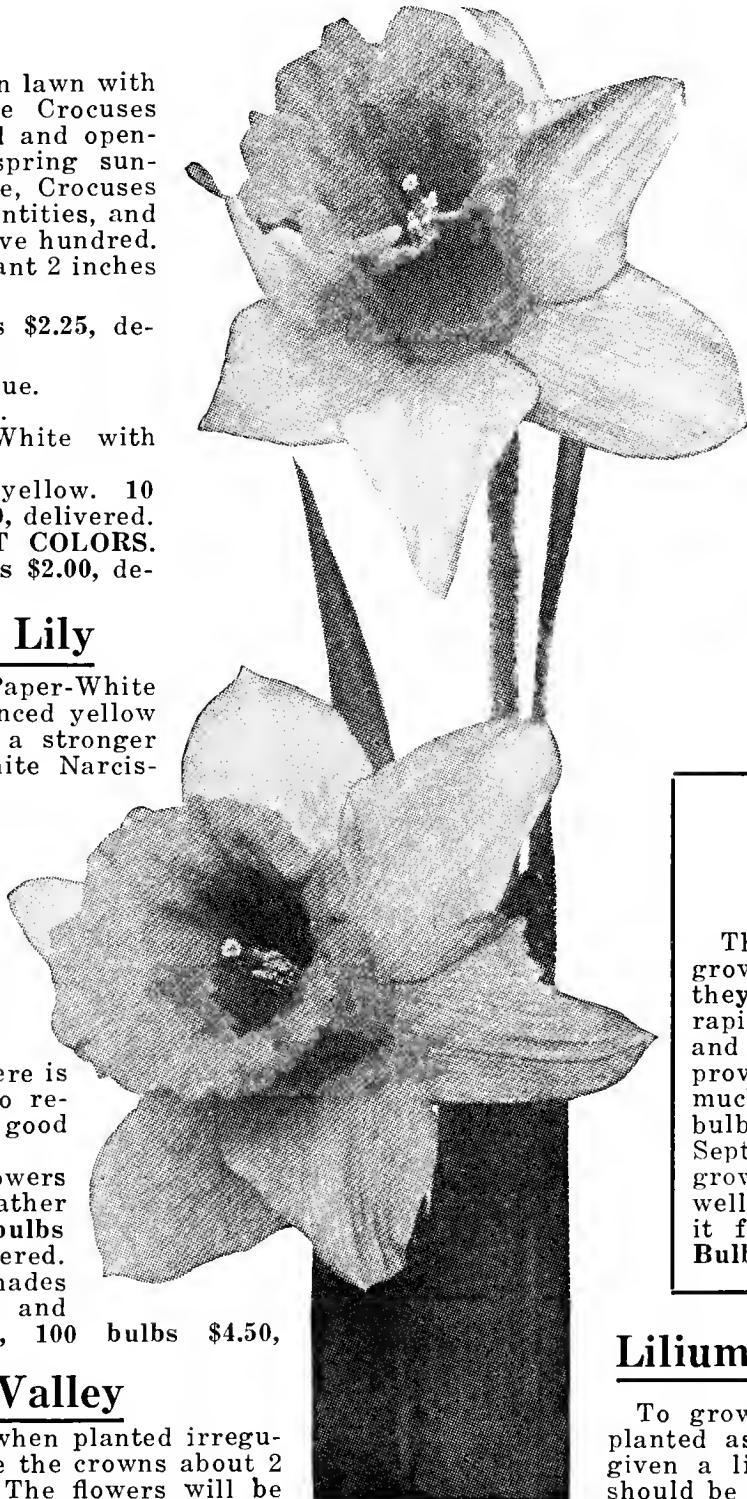
Paper-White Narcissus.  
Grandiflora

### Paper-White Narcissus Grandiflora

The most satisfactory flowers that can be grown in the house for winter blooming, and they require little care. The bulbs grow very rapidly, usually blooming in about six weeks, and will thrive under nearly every condition, provided they are given fresh air and not too much heat. For a succession of bloom the bulbs should be started every ten days from September to January. They are usually grown in water (see illustration), and it is well to change the water occasionally to keep it from becoming stagnant. 10 Mammoth Bulbs 60 cts., 100 bulbs \$4.75, delivered.

### Lilium Candidum (Madonna Lily)

To grow this Lily successfully, bulbs should be planted as early as procurable in the fall, and be given a light dusting of powdered sulphur. They should be set where they can get plenty of light and air, and covered with 2 or 3 inches of soil. Mammoth Size, single bulb 50 cts., 10 bulbs \$4.50. First Size, single bulb 25 cts., 10 bulbs \$2.25. Delivered.



King Alfred  
Narcissus.

## Tait's Superb Giant Darwin Tulips

Tulips bring glowing colors to spring gardens. No other bulbs make such a rich and gorgeous display of blossoms with so little care and cultivation as do our Tulips. Their early blooming, pretty cup-like flowers, gay colors, and brilliant effects make them spring favorites. They can be cultivated very easily, only requiring good, rich garden soil to grow them to perfection. Sheep manure and bone meal are the best fertilizers. Plant 4 inches deep and 4 to 6 inches apart.

**AFTERGLOW** (Katherine Havenmeyer). L. Height 26 inches. Deep rosy orange with salmon shading. Large flowers, and very showy. 10 bulbs 65 cts., 100 bulbs \$5.50, 1000 bulbs \$45.00. Delivered.

**ARIADNE**. M. Height 28 inches. Brilliant rosy crimson, shaded scarlet. Flowers cup shaped, very large, and most attractive. 10 bulbs 65 cts., 100 bulbs \$5.50, 1000 bulbs \$45.00. Delivered.

**BARON DE LA TONNAYE**. L. Height 26 inches. Vivid bright rose, margined blush rose. Huge cup-shaped flowers that retain their color well. Splendid for bedding. 10 bulbs 50 cts., 100 bulbs \$4.00, 1000 bulbs \$32.00. Delivered.

**BARTIGON**. M. Height 24 inches. Fiery crimson, with bright scarlet margin. Large flowers. Fine for beds or forcing. 10 bulbs 50 cts., 100 bulbs \$4.00, 1000 bulbs \$32.00. Delivered.

**BLEU AMIABLE**. L. Height 26 inches. Bright violet purple with steel blue shading. A very distinct and handsome tulip of large size and shapely form. 10 bulbs 65 cts., 100 bulbs \$5.50, 1000 bulbs \$45.00. Delivered.

**CLARA BUTT**. L. Height 20 inches. Bright shrimp pink with lighter edges. Its perfect shape and exquisite coloring makes this one of the most popular pink Darwins. 10 bulbs 50 cts., 100 bulbs \$4.00, 1000 bulbs \$32.00. Delivered.

**DREAM** (Reve de Jeunesse). M. Height 26 inches. Pale violet, changing to lavender, with lighter edges. Very dainty. 10 bulbs 65 cts., 100 bulbs \$5.50, 1000 bulbs \$45.00. Delivered.

**FARNCOMBE SANDERS**. E. Height 26 inches. Brilliant rosy scarlet. Flowers large and of perfect form. One of the most popular varieties for forcing or bedding. 10 bulbs 50 cts., 100 bulbs \$4.00, 1000 bulbs \$32.00. Delivered.

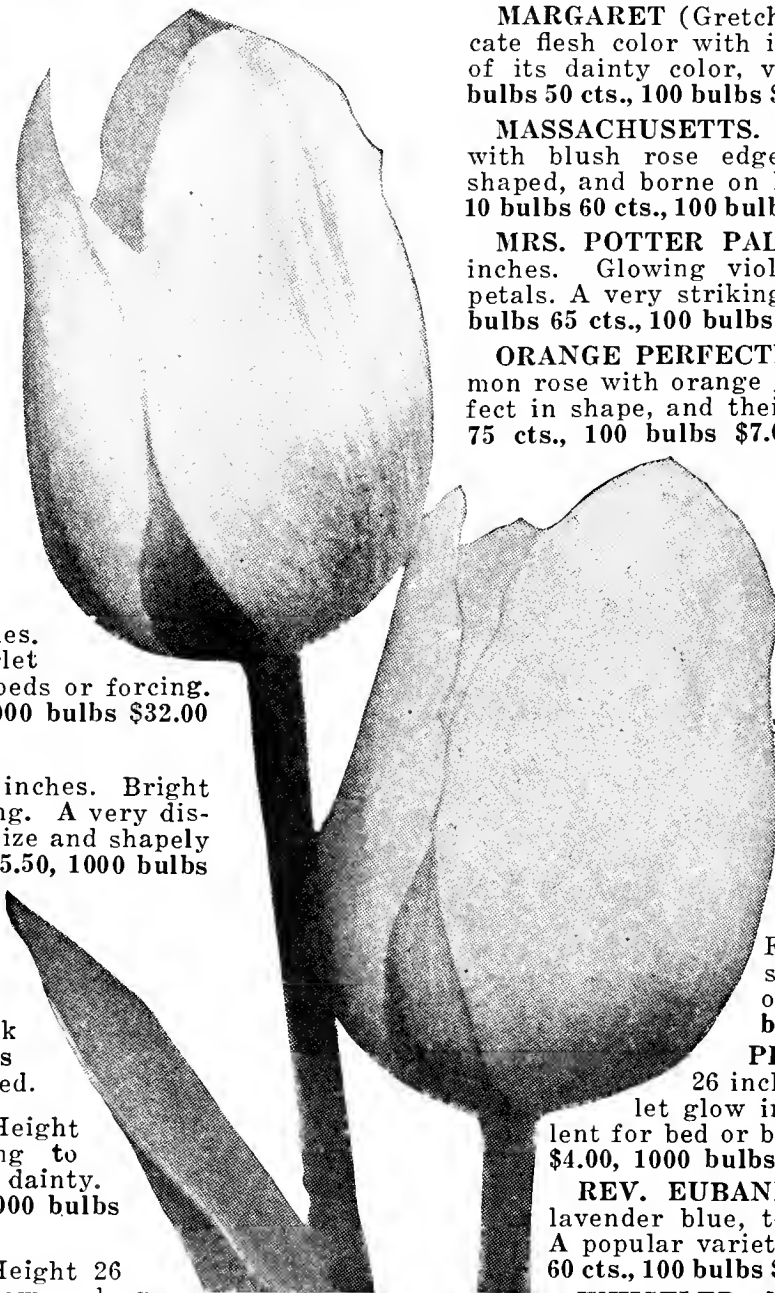
**FAUST**. E. Height 28 inches. Deep purple maroon, with satiny brilliancy. Flowers large and well formed. 10 bulbs 65 cts., 100 bulbs \$5.50, 1000 bulbs \$45.00. Delivered.

**FLAMINGO**. L. Height 26 inches. Beautiful shell pink. Flowers are pointed, and exceedingly attractive. 10 bulbs 65 cts., 100 bulbs \$5.50, 1000 bulbs \$45.00. Delivered.

**HARRY VEITCH**. E. Height 24 inches. Brilliant blood red with lighter margin. The flowers grow very large, and hold their color well. Good for bedding or forcing. 10 bulbs 65 cts., 100 bulbs \$5.50, 1000 bulbs \$45.00. Delivered.

**JUBILEE**. M. Height 28 inches. Royal purple, slightly paler at edges. Large flowers of superb open form, rich color, and lasting qualities. Always admired. 10 bulbs 75 cts., 100 bulbs \$7.00, 1000 bulbs \$60.00. Delivered.

**MADAM KRELAGE**. E. Height 28 inches. Soft lilac rose, with margin of blush pink. Flowers extra large. Very popular, and good for either forcing or bedding. 10 bulbs 50 cts., 100 bulbs \$4.00, 1000 bulbs \$32.00. Delivered.



Darwin Tulip  
"Clara Butt"

**MARGARET** (Gretchen). M. Height 22 inches. Delicate flesh color with interior of soft pink. On account of its dainty color, very popular for cut flowers. 10 bulbs 50 cts., 100 bulbs \$4.00, 1000 bulbs \$32.00. Delivered.

**MASSACHUSETTS**. E. Height 26 inches. Vivid pink, with blush rose edges. The flowers are large, oval shaped, and borne on long stems. Splendid for cutting. 10 bulbs 60 cts., 100 bulbs \$5.00, 1000 bulbs \$36.00. Deliv'd.

**MRS. POTTER PALMER** (Fashion). M. Height 26 inches. Glowing violet, with bluish sheen on outer petals. A very striking and distinct popular variety. 10 bulbs 65 cts., 100 bulbs \$5.50, 1000 bulbs \$45.00. Delivered.

**ORANGE PERFECTION**. M. Height 26 inches. Salmon rose with orange glow. The flowers are nearly perfect in shape, and their color is unsurpassed. 10 bulbs 75 cts., 100 bulbs \$7.00, 1000 bulbs \$60.00. Delivered.

**PAINTED LADY**. M. Height 26 inches. Creamy white, faintly tinged with heliotrope. A very beautiful and dainty flower. 10 bulbs 60 cts., 100 bulbs \$5.00, 1000 bulbs \$36.00. Delivered.

**PRIDE OF HAARLEM**. E. Height 26 inches. Brilliant old rose. Flowers of large size, superb form, and borne on tall strong stems. Sweet scented. Unsurpassed for borders or forcing. An old favorite. 10 bulbs 50 cts., 100 bulbs \$4.00, 1000 bulbs \$32.00. Delivered.

**PRINCESS ELIZABETH** (Julie Vinot). E. Height 26 inches. Lovely clear deep pink. Flowers quite large and oval shaped. Good for either forcing or bedding. 10 bulbs 60 cts., 100 bulbs \$5.00, 1000 bulbs \$36.00. Del.

**PROF. RAUWENHOF**. M. Height 26 inches. Bright cherry red, with scarlet glow inside. Enormous flowers. Excellent for bed or borders. 10 bulbs 50 cts., 100 bulbs \$4.00, 1000 bulbs \$32.00. Delivered.

**REV. EUBANK**. E. Height 22 inches. Deep lavender blue, toning at edges to pale lavender. A popular variety, and fine for borders. 10 bulbs 60 cts., 100 bulbs \$5.00, 1000 bulbs \$36.00. Delivered.

**WHISTLER**. M. Height 24 inches. Vivid crimson scarlet. This variety often produces more than one stem to a bulb, and two flowers on a stem. A showy tulip for borders. 10 bulbs 60 cts., 100 bulbs \$5.00, 1000 bulbs \$36.00. Delivered.

**WILLIAM COPELAND** (Sweet Lavender). E. Height 24 inches. Rosy lavender. While not perfect in shape, this variety is very popular on account of its pleasing color. 10 bulbs 60 cts., 100 bulbs \$5.00, 1000 bulbs \$36.00. Delivered.

**WILLIAM PITT**. E. Height 22 inches. Dark glowing crimson. The flowers are large and of great beauty. Splendid for cutting. 10 bulbs 60 cts., 100 bulbs \$5.00, 1000 bulbs \$36.00. Delivered.

**YELLOW PRINCE**. L. Height 20 inches. Sometimes called "Yellow Darwin," but in reality a Cottage Tulip. The flowers are large, Darwin shaped, and of a beautiful golden yellow color. 10 bulbs 50 cts., 100 bulbs \$4.00, 1000 bulbs \$32.00. Delivered.

**TAIT'S THOROBRED MIXTURE**. A splendid well-balanced mixture of Darwin Tulips that will give a magnificent display in beds or borders. 10 bulbs 40 cts., 100 bulbs \$3.00, 1000 bulbs \$28.00. Delivered.

## Cottage or May Flowering Tulips

Some of the best Tulips are found among the Cottage varieties. They are splendid for bedding, naturalizing, and especially for cutting. Blooming in May, their large, brilliant flowers are borne on long, strong stems.

**DAINTY MAID.** M. 18 inches. White, feathered and veined bright blue. Extremely dainty. 10 bulbs 60 cts., 100 bulbs \$5.00, 1000 bulbs \$36.00. Delivered.

**FAIRY QUEEN.** M. 18 inches. Rosy heliotrope, with broad amber-yellow margin. Very artistic. 10 bulbs 60 cts., 100 bulbs \$5.00, 1000 bulbs \$36.00. Delivered.

**GESNERIANA LUTEA.** L. 20 inches. Pure golden yellow, which never looks faded. The flowers are large, and carried on strong stems. The best late yellow for bedding. 10 bulbs 50 cts., 100 bulbs \$4.00, 1000 bulbs \$32.00. Delivered.

**GESNERIANA SPATULATA.** M. Height 24 inches. Rich crimson scarlet. One of the best red tulips for large plantings. Excellent for cutting. 10 bulbs 50 cts., 100 bulbs \$4.00, 1000 bulbs \$32.00. Delivered.

**INGLESCOMBE PINK** (Salmon Queen). E. Height 24 inches. Clear vivid pink, with salmon flush. Flowers very large and beautiful. 10 bulbs 50 cts., 100 bulbs \$4.00, 1000 bulbs \$32.00. Delivered.

**INGLESCOMBE SCARLET.** L. Height 16 inches. Brilliant glowing scarlet. Flowers very showy, and borne on strong stems. Fine for borders and shrubbery. 10 bulbs 50 cts., 100 bulbs \$4.00, 1000 bulbs \$32.00. Delivered.

**INGLESCOMBE YELLOW.** L. Height 18 inches. Bright canary yellow. Fine, large, globular shaped flowers. Often called the "Yellow Darwin." 10 bulbs 50 cts., 100 bulbs \$4.00, 1000 bulbs \$32.00. Delivered.

**JOHN RUSKIN.** M. Height 16 inches. Salmon rose and mauve, with pale yellow edge. The lovely combination of color makes this a most popular variety. 10 bulbs 60 cts., 100 bulbs \$5.00, 1000 bulbs \$36.00. Delivered.

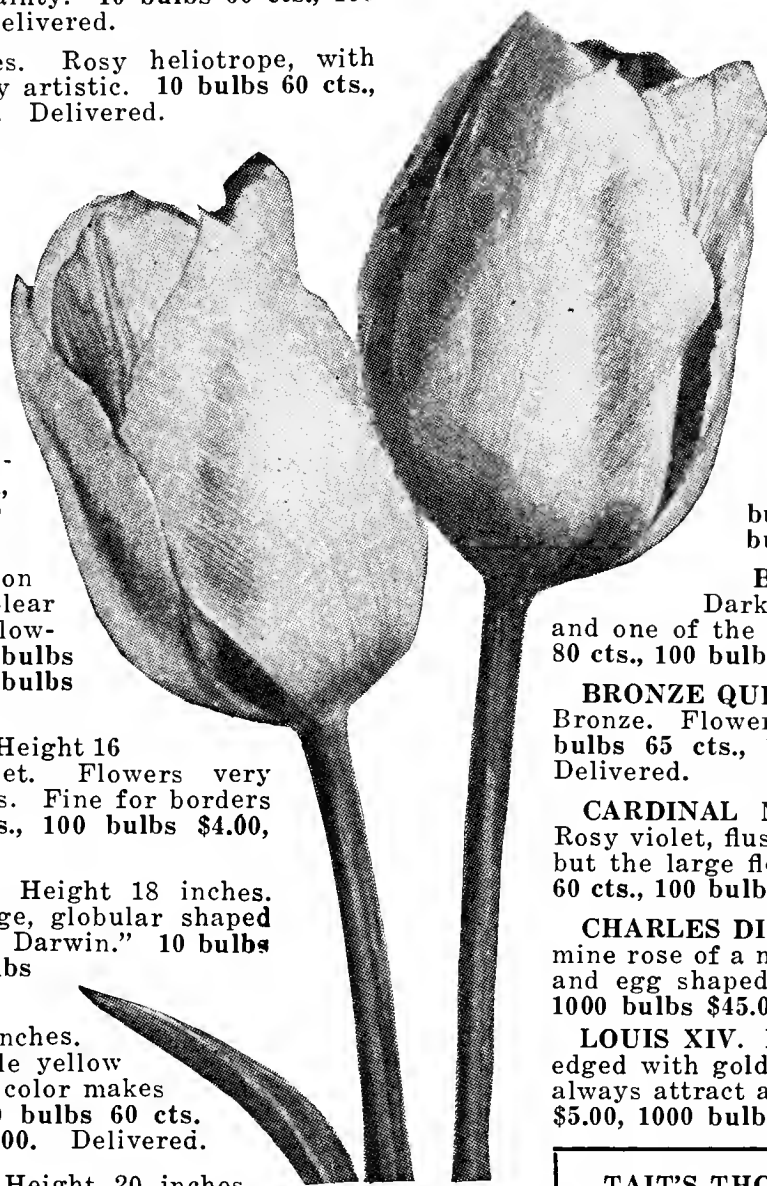
**MISS ELLEN WILMOTT.** E. Height 20 inches. Primrose yellow, edged with golden yellow. Flowers are long, pointed, and sweet scented. 10 bulbs 65 cts., 100 bulbs \$5.50, 1000 bulbs \$45.00. Delivered.

**MRS. MOON.** L. Height 26 inches. Rich golden yellow. Flowers are long and pointed. Outer petals reflexed and sweet scented. Very popular variety. 10 bulbs 70 cts., 100 bulbs \$6.00, 1000 bulbs \$50.00. Delivered.

**MOONLIGHT.** E. Height 24 inches. Soft luminous canary yellow. The flowers are rather long, oval shaped, and carried on strong stems. 10 bulbs 65 cts., 100 bulbs \$5.50, 1000 bulbs \$45.00. Delivered.

**ORANGE KING.** L. Height 18 inches. Bright orange, shaded rose. Flowers quite large and sweet scented. 10 bulbs 65 cts., 100 bulbs \$5.50, 1000 bulbs \$45.00. Delivered.

**PICOTEE** (Maiden's Blush). M. Height 20 inches. Pure white flowers with re-curved petals, margined with rose. The rose color on the edges suffuses the whole flower as it ages. Very dainty. 10 bulbs 50 cts., 100 bulbs \$4.00, 1000 bulbs \$32.00. Delivered.



Cottage Tulip  
"Moonlight."

## Breeder Art Tulips

Much admired for their peculiar and odd "art colors" of bronze, brown and buff tones, and for the size of their blooms and great lasting qualities, which make them unusually suited for garden decorations.

**APRICOT.** M. Height 24 inches. Deep bronze orange, shaded apricot. Flowers large and attractive. 10 bulbs 65 cts., 100 bulbs \$5.50, 1000 bulbs \$45.00. Delivered.

**BACCHUS.** M. Height 26 inches. Dark violet blue. Very large flowers, and one of the best dark Breeder Tulips. 10 bulbs 80 cts., 100 bulbs \$7.00, 1000 bulbs \$60.00. Delivered.

**BRONZE QUEEN.** L. Height 26 inches. Golden Bronze. Flowers large and beautifully shaped. 10 bulbs 65 cts., 100 bulbs \$5.50, 1000 bulbs \$45.00. Delivered.

**CARDINAL MANNING.** L. Height 28 inches. Rosy violet, flushed with rosy brown. An odd color, but the large flowers are very attractive. 10 bulbs 60 cts., 100 bulbs \$5.00, 1000 bulbs \$36.00. Delivered.

**CHARLES DICKENS.** M. Height 20 inches. Carmine rose of a most attractive shade. Flowers large and egg shaped. 10 bulbs 65 cts., 100 bulbs \$5.50, 1000 bulbs \$45.00. Delivered.

**LOUIS XIV.** M. Height 26 inches. Royal purple, edged with golden bronze. Flowers very large, and always attract attention. 10 bulbs 60 cts., 100 bulbs \$5.00, 1000 bulbs \$36.00. Delivered.

**TAIT'S THOROBRED MIXTURE.** A collection of Breeder Tulips selected for their size and coloring. 10 bulbs 60 cts., 100 bulbs \$5.00, 1000 bulbs \$36.00. Delivered.

## Parrot Tulips

The petals of this class appear as if torn along the edges, and turn inward at the tips. The colors are quite striking and unusual.

**ADMIRAL DE CONSTANTINOPLE.** Scarlet, with orange shadings. 10 bulbs 60 cts., 100 bulbs \$5.00, 1000 bulbs \$36.00. Delivered.

**CRAMOISI BRILLIANT.** Brilliant crimson, with blue markings. 10 bulbs 60 cts., 100 bulbs \$5.00, 1000 bulbs \$36.00. Delivered.

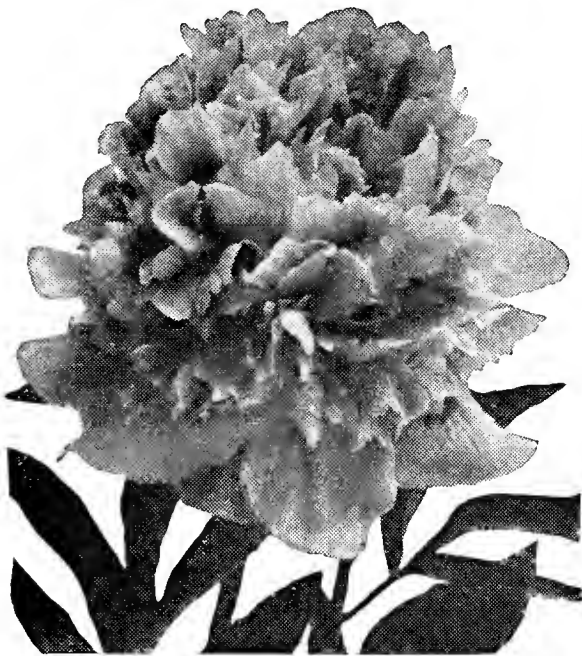
**LUTEA MAJOR.** Yellow, red, and green markings. 10 bulbs 60 cts., 100 bulbs \$5.00, 1000 bulbs \$36.00. Delivered.

**PERFECTA.** Yellow and red. 10 bulbs 60 cts., 100 bulbs \$5.00, 1000 bulbs \$36.00. Delivered.

**TAIT'S THOROBRED MIXTURE.** A collection of Cottage Tulips suitable for beds or borders that will produce wonderful color effect. 10 bulbs 40 cts., 100 bulbs \$3.00, 1000 bulbs \$28.00. Delivered.

**TAIT'S THOROBRED MIXTURE.** A splendid blend of Parrot Tulips, containing all of the above named varieties, as well as other colors. 10 bulbs 50 cts., 100 bulbs \$4.00, 1000 bulbs \$32.00. Delivered.

## PEONIES



Peony, Mons Jules Elie

Peonies have been remarkably improved upon in the last few years, and can now be obtained in new colors and types of beauty. The roots can be planted in the fall or early spring. They will do well in any good garden soil. Be careful not to get them too deep; if the bulbs are covered with more than 2 inches of soil, the quantity of flowers is likely to be limited.

**MONS JULES ELIE.** Large globular flowers of a delicate lilac pink, deeper rose at the base. One of the best pink peonies. 85 cts. each, \$8.50 per doz.

**FELIX CROUSE.** Brilliant dazzling ruby red. Should be in every collection. 85 cts. each, \$8.50 per doz.

**EDULIS SUPERBA.** Mauve-pink; large and very handsome. 75c cts. each, \$7.50 per doz.

**FESTIVA MAXIMA.** Handsome snow-white flowers with occasional markings of red in the center. 50 cts. each, \$5.00 per doz.

**THE PRESIDENT.** Large flowers of Hydrangea pink. Very beautiful. 75 cts. each, \$7.50 per doz.

**UNNAMED VARIETIES—**Pink, Red, White. 45 cts. each, \$4.50 per doz.

## Tait's Giant Spencer Sweet Peas

Nothing in recent years is more remarkable than the wonderful improvement made in the development of Sweet Peas. The Giant Summer Flowering Spencer type, with its waved and fluted petals, which usually produces four blooms to the stem, has become one of our most popular annual flowers. From the numerous varieties, many of which are practically identical, we have selected the following, which we believe to be the "cream" of old and new varieties. While the Early Flowering sorts can be sown out of doors, they are usually sown in greenhouses for winter blooming.

In the South, Sweet Peas are sown in the fall as well as in the early spring. To secure large flowers and brilliant colors, sow the seeds in a rich soil that has been heavily manured, and in a location where the plants will get plenty of sunshine. Many experts dig a trench about 10 inches deep and fill the bottom with 3 inches of well-rotted manure or some good substitute, covering this with 2 inches of good soil. The seeds are sown on the soil and covered with 2 inches of soil, and as the seedlings show above the surface, the rest of the soil is raked into the trench. When watering, keep the water near the roots, since sprinkling the vines does more harm than good. Pick the blooms regularly, and they will bear longer. Peat moss makes a good mulch for Sweet Peas. If green aphid or lice attack the plants, spray with Black Leaf 40.

### 20 POPULAR GIANT SUMMER FLOWERING SPENCER SWEET PEAS

- |  |                                 |
|--|---------------------------------|
| ★ Mrs. Tom Jones—Amethyst blue.          | ★ Sunkist—Pink, cream ground.   |
| Blue Bird—Brilliant blue.                | ★ Constance Hinton—Giant white. |
| Fortune—Violet blue.                     | ★ Youth—Pink, white ground.     |
| ★ Powerscourt—Large lavender.            | ★ Pinkie—Immense rose pink.     |
| ★ Gleneagles—Immense lavender blue.      | ★ Magnet—Deep creamy pink.      |
| What Joy—Primrose yellow, shading cream. | Rosabelle—Giant rose self.      |
| ★ Warrior—Splendid maroon.               | Miss Norfolk—Dazzling scarlet.  |
| ★ Mrs. A. Searles—Salmon cerise.         | ★ Grenadier—Cerise scarlet.     |
| ★ Flamingo—Scarlet cerise.               | Eosine—Eosine pink.             |
|  | Ruffled Rose—Brilliant rose.    |
|  | Ruffled Orchid—Delicate orchid. |

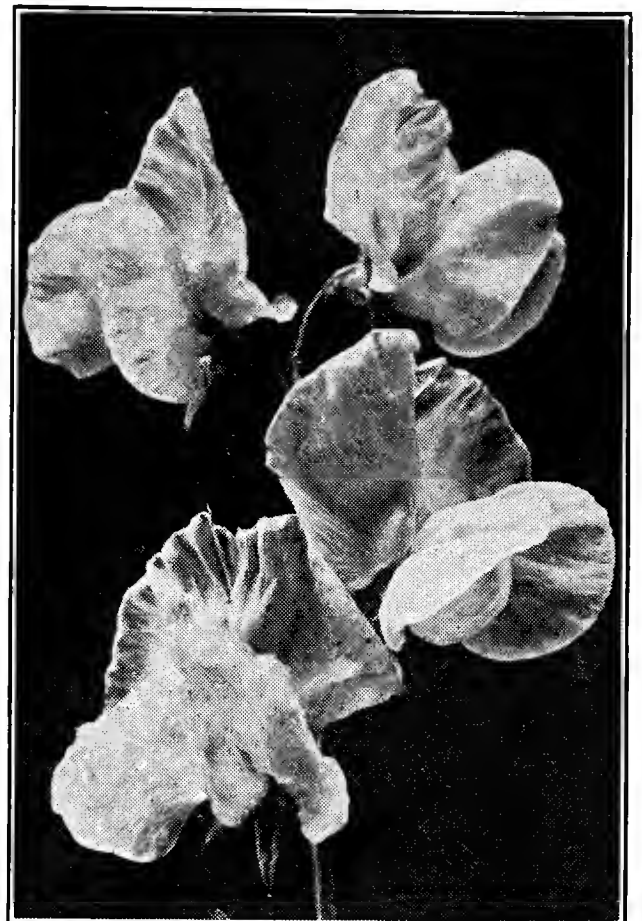
Any of the above, pkt. 10 cts., oz. 20 cts., ½ lb. 60 cts., lb. \$2.25. Postpaid.

(Note: The twelve sweet peas marked above with a star ★ were also recently chosen as the most popular sweet peas in Great Britain.)

### 10 POPULAR EARLY FLOWERING SPENCER SWEET PEAS

- |                                  |                                   |
|----------------------------------|-----------------------------------|
| Early Blue Bonnet—Clear blue.    | Early All White—Pure white.       |
| Early Aviator—Large crimson.     | Early Glitters—Brilliant cerise.  |
| Early Vogue—Splendid lavender.   | Early Grenadier—Scarlet self.     |
| Early Imperial Pink—Pure pink.   | Early Pal—Rich rose crimson.      |
| Early Mrs. Coolidge—Salmon pink. | Zvolanek's Rose—Bright rose pink. |

Any of the above, pkt. 10 cts., oz. 60 cts., ¼ lb. \$1.75, lb. \$6.00. Postpaid.



Giant Summer Flowering Sweet Pea Pinkie

### Tait's Thorobred Mixture Giant Spencer Summer Flowering Sweet Peas

This mixture is a combination of over fifty of the most beautiful varieties, and includes every describable color and shade, and is highly complimented in all parts of the country. Nothing better in mixture can be had at any price. Pkt. 10 cts., oz. 20 cts., ¼ lb. 60 cts., lb. \$2.00. Postpaid.

PLANT SWEET PEAS IN THE FALL



# TAIT'S OLD-FASHIONED PERENNIALS

No part of the garden is more beautiful than the section devoted to Perennials. With them you can obtain beautiful color effects from spring to fall. For the best results, sow the seeds in rows during the months of July, August and September. When the plants have grown to a respectable height you can move them to a permanent location. In the South any of the perennials may be sown in cold frames during October and November, and transplanted to the open ground in the early spring. All prices postpaid.

## CANDYTUFT

(Iberis)

Perennial varieties producing attractive flowers April to June. Height 10 inches.

**Sempervirens**—White. Pkt. 15 cts., oz. \$2.25.

**Gibraltarica**—Blush Lilac. Pkt. 10 cts., oz. \$1.25.

## CANTERBURY BELLS

(Campanula)

Attractive and showy flowers May to July which succeed best in rich well-drained soil.

Bi-Annuals

Medium, Single. Large, bell-shaped flowers in many shades. Height 2 feet. Blue, White, Rose, or Mixed. Each, pkt. 10 cts., oz. 75 cts.

Medium calycanthema (Cup-and-Saucer Canterbury Bells). This is the finest type of this old-fashioned and much prized garden plant. Height 3 feet. Blue, White, Rose, or Mixed. Each, pkt. 15 cts., oz. \$1.50.

Perennial

**Carpatica** (Carpathian Harebell). Free flowering hardy plant continuing in bloom the whole season. Color clear blue. Height 6 inches. Pkt. 10 cts., oz. \$1.25.

## CARNATION

**Chaubaud's Everblooming**. Splendid double flowers, perfectly formed, on long sturdy stems that bloom ninety days from seeding. Height 1½ feet. Mixed colors. Pkt. 25 cts., oz. \$2.00.

## COLUMBINE

(Aquilegia)

These are among the most beautiful of our late spring and early summer flowers, especially the long spurred types. Height 2 feet.

**Tait's Long-Spurred Hybrids**. A splendid mixture of many colors. Pkt. 15 cts., oz. \$4.50.

**Coerulea** (Rocky Mountain Columbine). Large flowers, violet blue, and white. Pkt. 10 cts., oz. \$3.00.

**Mrs. Scott Elliott's Select Long-Spurred Strain**. Choice Varieties Mixed. Pkt. 25 cts., oz. \$4.50.

## DAISY

(Bellis)

Double English Daisy is fine for edgings, borders and low beds. The flowers are white, pink and red and mixed, perfectly double and bloom from April to July. Height 6 inches. Finest mixed. Pkt. 10 cts., oz. \$2.50.

## DELPHINIUM

(Hardy Larkspur)

These plants make a tall growth and bear beautiful flowers in graceful spikes. May to August. To get the best results, sow the seeds in a box of prepared soil under glass. Height 5 to 7 feet.

**Gold Medal Hybrids**. This is the finest strain of mixed hybrids ever offered. The plants are of strong vigorous habit, with large flowers of many shades of blue. Pkt. 15 cts.

**Delphinium Belladonna**. (Ever-blooming Hardy Larkspur)—This is the freest and most continuous blooming hardy Larkspur. The color is clear turquoise. Pkt. 25 cts.

**Delphinium Chinensis**. (Blue Butterfly)—A distinct and neat variety growing 18 inches high and producing freely spikes of large dark blue blossoms. Pkt. 25 cts.

**Wrexham Hybrids (Hollyhock Strain)**. Splendid blue shades, mixed. Pkt. 25 cts.

## DORONICUM

(Leopard's Bane)

Large bright yellow daisy-like flowers, becoming more popular each season. Bloom May and June and again in fall. Splendid for cutting. Height 2 feet. Pkt. 50 cts.

## FORGET-ME-NOT

Little star-shaped blue flowers blooming early in the season. Good for edging, as the plants attain a height of only 6 inches. Pkt. 10 cts. oz. \$1.25.

## FOXGLOVE

(Digitalis)

An old fashioned stately flower that should be in every garden. Blooms during June and July. Height 3 feet. Purple, Rose, White, or Mixed. Each, pkt. 10 cts., oz. \$1.50. Postpaid.

**Giant Shirley**. The finest strain yet introduced, with colors ranging from white to dark rose. Height 4 feet. Mixed, pkt. 15 cts., oz. \$2.00.

## GEUM

Beautiful showy double flowers bearing through the summer. Elegant for cut flowers. Height 1½ feet.

**Mrs. Bradshaw**. Brilliant orange scarlet. Pkt. 15 cts., oz. \$3.00.

**Lady Stratheden**. Golden yellow. Pkt. 20 cts., oz. \$3.00.

## HOLLYHOCK

The beautiful color effects and the dignified stately appearance makes this one of the best popular flowers in the old fashioned garden, and they are without an equal as a background for other flowers. Bloom May to July. Height 5 to 7 feet.

**Charter's Superb Double**. White, Crimson, Pink, Yellow, or Extra Choice Mixed. Each, pkt. 10 cts., oz. \$2.50.

**Allegheny Fringed**. Large, loosely formed semi-double flowers and beautifully fringed petals. Height 6 to 8 feet. Pkt. 10 cts., oz. \$1.00.

## LYCHNIS

(Viscaria Splendens)

This handsome flower blooming in June and July is of easy culture, growing about 12 inches high. The color is bright rose-red. Splendid for massing in beds or borders. Pkt. 10 cts., oz. \$1.25.

## LUPINUS

**LUPINS POLYPHYLLUS**, effective flowers succeeding in any good garden soil. Blooms in May and June. Height 3 feet.

**Blue**. Pkt. 10 cts., oz. 50 cts.

**Rose**. Pkt. 15 cts., oz. 75 cts.

**Regal Hybrids Mixed**. Pkt. 15 cts., oz. \$1.50.

## PAINTED DAISY

(Pyrethrum)

Beautiful daisy-like flowers, ranging in color from white to bright red, with bright yellow centers. Bloom during May and June, and again in the fall. Height 1½ feet. Pkt. 15 cts., oz. \$2.25.

## PANSY

Dainty flowers of many colors blooming from early spring until late summer.

**Tait's Thorobred Giant Exhibition Strain**. Giant flowers. Pkt. 25 cts., oz. \$10.00.

**Fine Large Flowering**. Flowers of good size. Pkt. 10 cts., oz. \$2.00.

## PENSTEMON

(Beard Tongue)

Splendid perennial growing about 2 feet high, blooming June to August. Splendid for rock gardens.

**Blue Gem**. Bright blue. Pkt. 15 cts., oz. \$3.00.

**Barbatus Tarreyii**. Brilliant coral red. Pkt. 10 cts., oz. \$1.75.

**Sensation Mixed**. Pkt. 25 cts., oz. \$4.00.

## ICELAND POPPY

Hardy perennials that bloom the first year from seed. White, Red and Finest Mixed. Each pkt. 10 cts., oz. \$1.50.

## ORIENTAL POPPY

A charming summer flowering perennial.

**Scarlet**. Pkt. 10 cts., oz. \$1.50.

**Salmon Pink**. Pkt. 15 cts., oz. \$5.00.

**Finest Mixed**. Pkt. 10 cts., oz. \$1.50.

## PHLOX

Popular perennials that bloom throughout the summer.

**Decussata**. The flower heads of this variety are produced in many shades from white to deep red. Height 2 feet. Pkt. 15 cts., oz. \$4.00.

## RUDBECKIA

(Black Eyed Susan)

Splendid for planting in borders. Flowers yellow with dark brown center. May to July. Height 1½ feet.

**Hirta**. Pkt. 15 cts., oz. \$1.50.

## SCABIOSA

(Mourning Bride)

A great improvement over the ordinary variety, being more vigorous, with larger and longer stems, and heavier petals, which are ruffled and frilled on the edges. Colors range from white to darkest blue. Height 2 feet.

**Caucasica (Blue Bonnet)**. Pkt. 20 cts., oz. \$3.00.

**Giant Hybrids**. (Isaac House strain.) Pkt. 25 cts., oz. \$4.50.

## SWEET WILLIAM

An old garden favorite with clusters of brilliant flowers, displaying a great range of color. April to June. Height 1 foot.

**Single**. Pink, Red, Mixed. Each, pkt. 10 cts., oz. 75 cts.

**Double**. Pink, Red, Mixed. Each, pkt. 10 cts., oz. 75 cts.

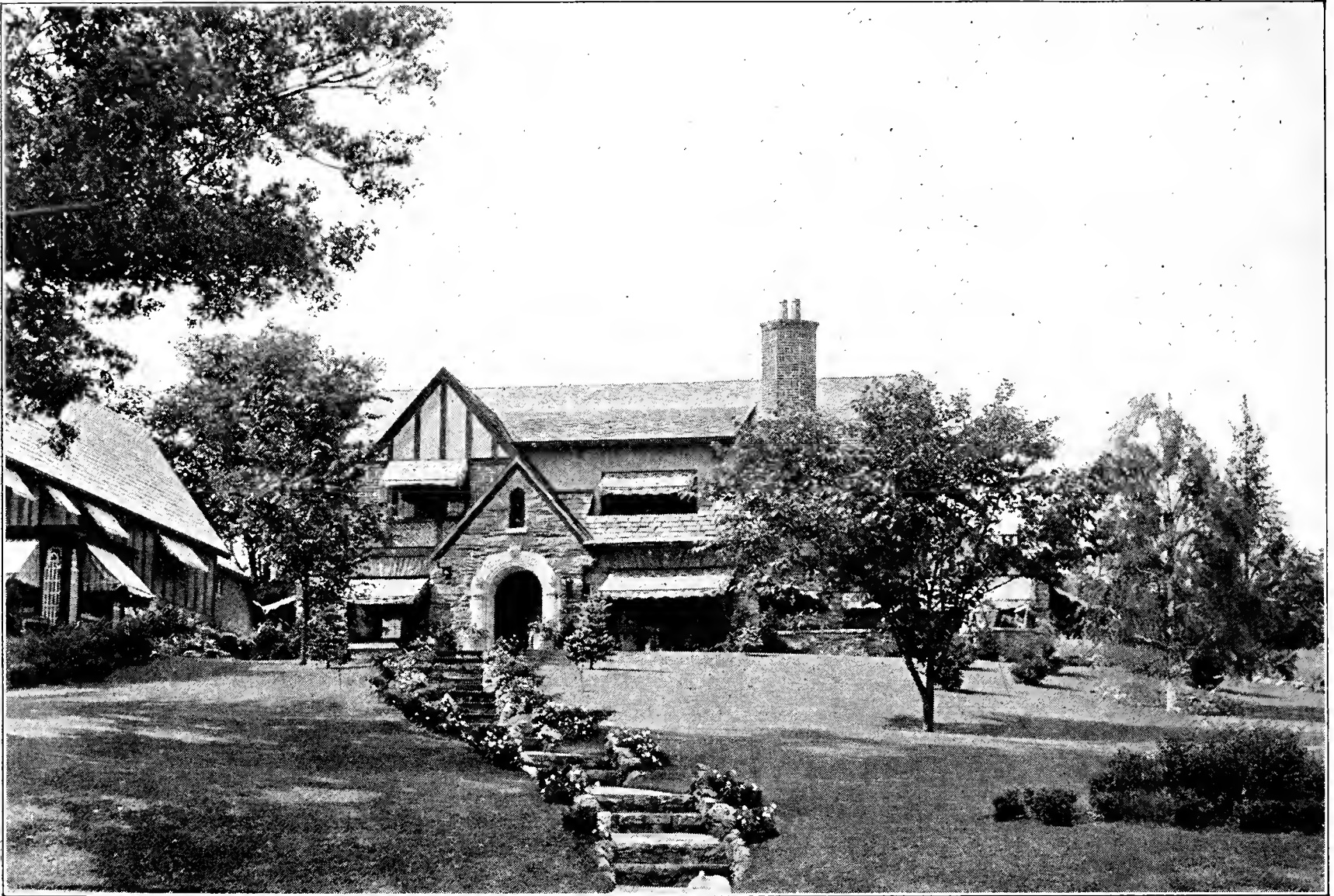
**Newport Pink**. Pkt. 10 cts., oz. \$1.00.

## WALLFLOWER

In the early spring the long spikes of crimson, purple, yellow, and pink flowers make a handsome appearance in the garden. Height 1 foot.

**Large Flowering, Double, Mixed Colors**. Pkt. 15 cts., oz. \$4.00.

**Large-Flowering, Single, Mixed Colors**. Pkt. 10 cts., oz. \$1.50.



## Tait's Famous Grass Mixtures

The Grass Seeds in our Lawn Mixtures are extra choice, re-cleaned, tested, and are of the highest purity and germination, and one pound will sow a plot 10x20-200 square feet.

**TAIT'S THOROBRED MIXTURE.** The best mixture of fine leaved grasses for open situations, Delaware to North Carolina. Lb. 45 cts., 2 lbs. 85 cts., 5 lbs. \$1.85, 10 lbs. \$3.50, 25 lbs. \$8.25, 100 lbs. \$32.00. Delivered.

**TAIT'S EVERGREEN MIXTURE.** A combination of grasses and White Clover for sunny situations, Virginia and North Carolina. Lb. 40 cts., 2 lbs. 75 cts., 5 lbs. \$1.75, 10 lbs. \$3.25, 25 lbs. \$7.50, 100 lbs. \$27.50. Delivered.

**TAIT'S SUNNY SOUTH MIXTURE.** Especially prepared for the far south and seashore lawns. Lb. 45 cts., 2 lbs. 85 cts., 5 lbs. \$1.85, 10 lbs. \$3.50, 25 lbs. \$8.25, 100 lbs. \$32.00. Delivered.

**TAIT'S SHADY PLACE MIXTURE.** Recommended for shady situations, under trees, or close to walls. Lb. 50 cts., 2 lbs. 95 cts., 5 lbs. \$2.25, 10 lbs. \$4.25, 25 lbs. \$10.00, 100 lbs. \$39.00. Delivered.

**TAIT'S TERRACE MIXTURE.** A mixture of fine stoloniferous grasses peculiarly adapted for terraces. Lb. 45 cts., 2 lbs. 85 cts., 5 lbs. \$1.85, 10 lbs. \$3.50, 25 lbs. \$8.25, 100 lbs. \$32.00. Delivered.

Pamphlet for the Making and Care of LAWNS Mailed Free on Request.

**Geo. Tait & Sons**  **Norfolk, Va.**

**THOROBRED SEEDS**

*Best by Test for Over Sixty Years*

1932